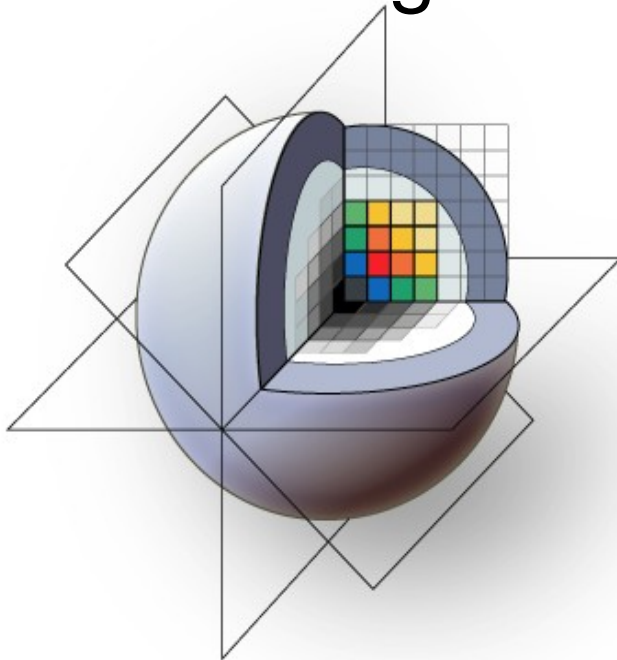


## Slicer3 Training Tutorial

# Centerline Extraction of Coronary Arteries in 3D Slicer using VMTK based Tools



Daniel Hähn

Student of Medical Informatics  
University of Heidelberg, Germany

Contact: [haehn@bwh.harvard.edu](mailto:haehn@bwh.harvard.edu)

# *Learning Objective*

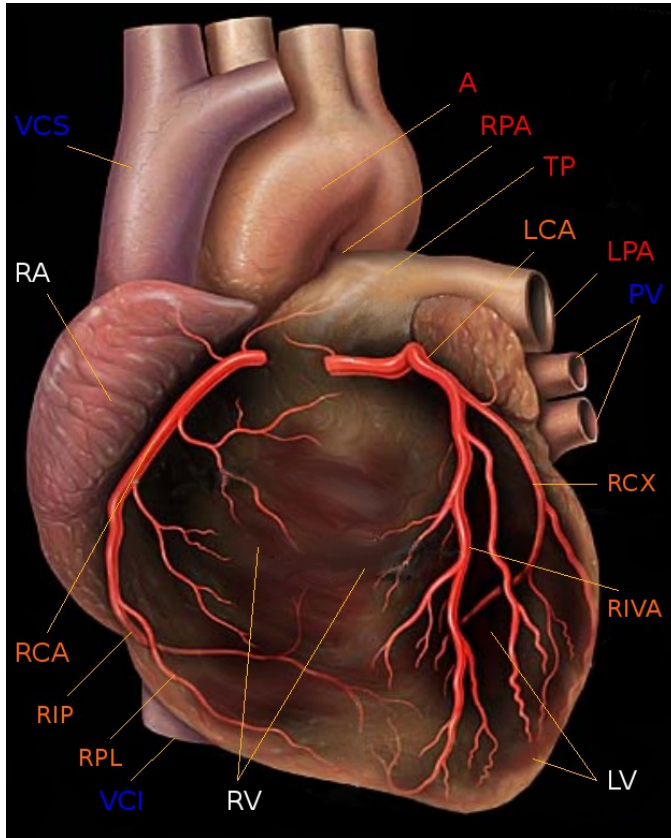
---



Guiding you step by step through the process of centerline extraction of Coronary Arteries in a cardiac blood-pool MRI using VMTK based Tools.



# Background



Human Heart with Coronaries, Author: Patrick J. Lynch (1999), Creative Commons License

Coronary heart disease (CHD) is the leading cause of death in high-income countries and one of the main causes of death worldwide\*.

The primary cause for CHD is atherosclerosis of the coronary arteries and is called coronary artery disease (CAD).

The extraction of the central lumen line (centerline) of coronary arteries is helpful for visualization purposes, stenosis quantification or further processing steps.

\* WHO Fact Sheet 310: <http://www.who.int/mediacentre/factsheets/fs310/en/index.html>



# Materials

---

This tutorial requires the installation of the **Slicer3** software and the tutorial dataset. They are available at the following locations:

- **Slicer3** download page (***Slicer 3.5 Nightly Build\****)

<http://slicer.org/pages/Special:SlicerDownloads>

- Unzipped **Tutorial MRI data** (3 files)

[http://www.na-mic.org/Wiki/index.php/File:TutorialVMTKCoronariesCenterlinesMRI\\_Data\\_Winter2010AHM.zip](http://www.na-mic.org/Wiki/index.php/File:TutorialVMTKCoronariesCenterlinesMRI_Data_Winter2010AHM.zip)

**Disclaimer:** *It is the responsibility of the user of Slicer to comply with both the terms of the license and with the applicable laws, regulations, and rules.*

\* or a Snapshot after December 2009, the Slicer3 extension system has to work properly



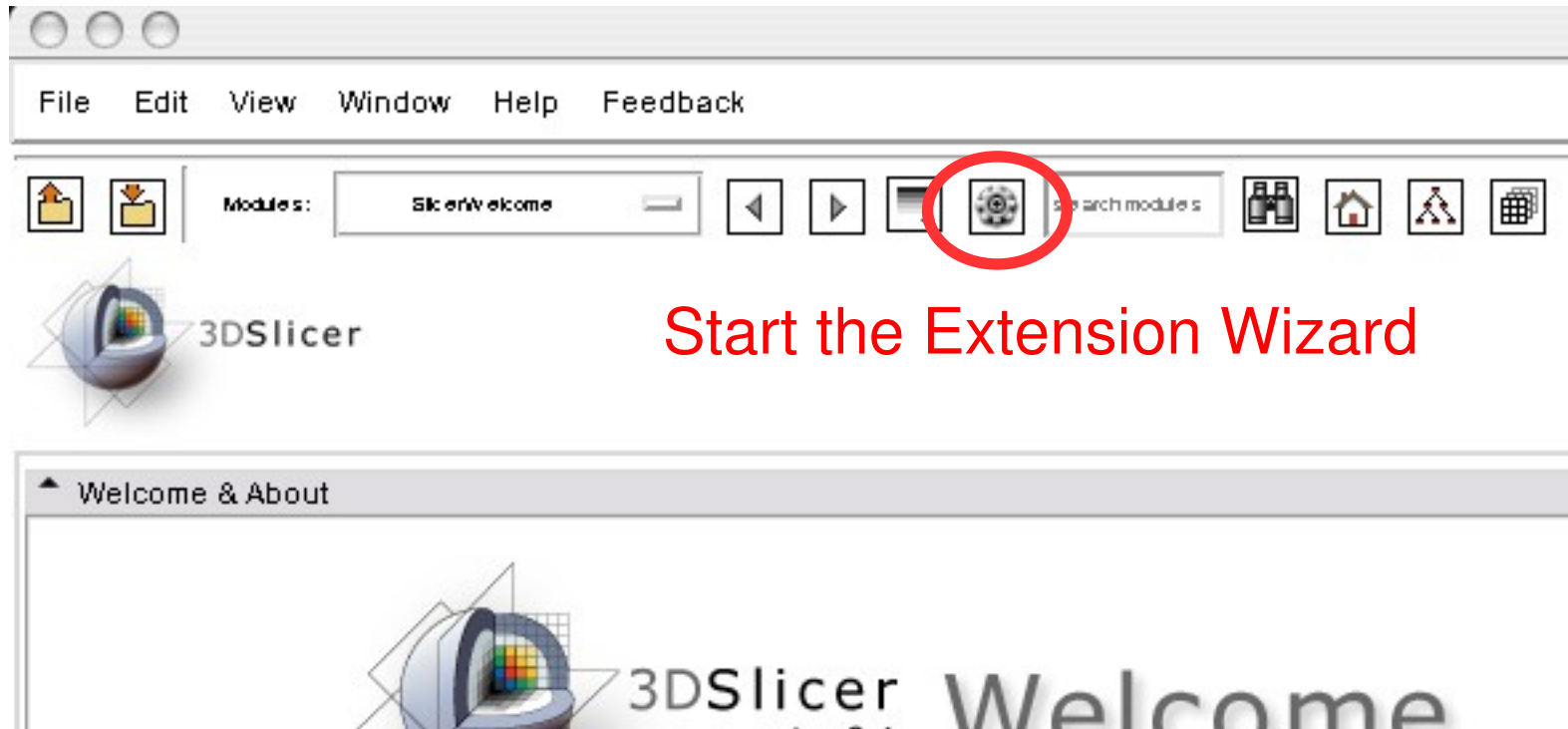
# Overview

---

Installing VMTK in 3D Slicer	6-12
The Pipeline	13
Loading Data	14-19
Extracting the ROI	20-32
Vesselness Filtering	33-43
Level Set Segmentation	44-57
Centerline Computation	58-69
Results	70-75
References	76
Acknowledgements	77

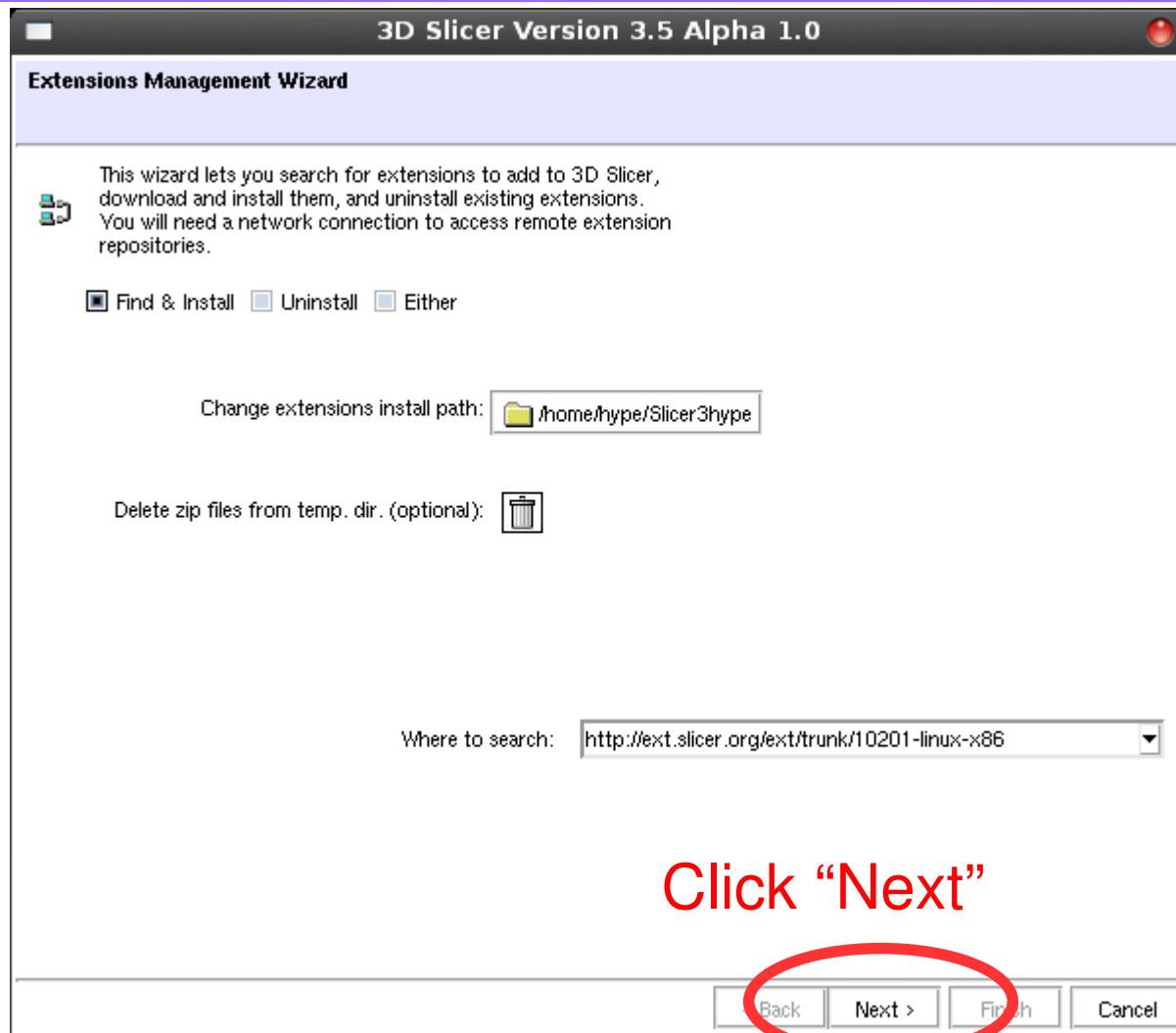


# Installing VMTK in 3D Slicer





# Installing VMTK in 3D Slicer



# Installing VMTK in 3D Slicer

3D Slicer Version 3.5 Alpha 1.0

Extension Management Wizard

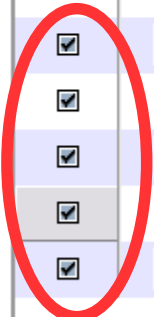
Select extensions, then click uninstall to remove them from your version of 3D Slicer, or click download to retrieve them.

Select	Status	Name	Category	Description	Home
<input type="checkbox"/>		PythonSampleScriptedModule	Developer Tools	This is an exam	
<input type="checkbox"/>		RobustStatisticsSegModule	Segmentation	Skull sttipping 1	
<input type="checkbox"/>		RobustStatisticsSegModule	Segmentation	Skull sttipping 1	
<input type="checkbox"/>		PythonSampleScriptedModule	Developer Tools	This is an exam	
<input checked="" type="checkbox"/>		VMTKCenterlines	Segmentation	Centerline com	
<input checked="" type="checkbox"/>		VMTKEasyLevelSetSegmentation	Segmentation	Easier interface	
<input checked="" type="checkbox"/>		VMTKLevelSetSegmentation	Segmentation	Interactive Leve	
<input checked="" type="checkbox"/>		VmtkSlicerModule	Library	The Vascular Iv	
<input checked="" type="checkbox"/>		VMTKVesselEnhancement	Filtering	Vessel Enhanc	

Download & Install Uninstall

< Back Next > Finish Cancel

Select all VMTK Extensions





# Installing VMTK in 3D Slicer

3D Slicer Version 3.5 Alpha 1.0

Extension Management Wizard

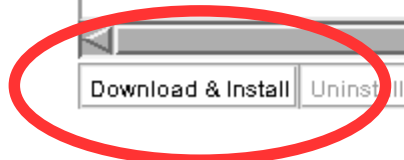
Select extensions, then click uninstall to remove them from your version of 3D Slicer, or click download to retrieve them.

Select	Status	Name	Category	Description	Home
<input type="checkbox"/>		PythonSampleScriptedModule	Developer Tools	This is an exam	
<input type="checkbox"/>		RobustStatisticsSegModule	Segmentation	Skull sttipping 1	
<input type="checkbox"/>		SkullStripperModule	Segmentation	Skull sttipping 1	
<input type="checkbox"/>		TclSampleScriptedModule	Developer Tools	This is an exam	
<input checked="" type="checkbox"/>		VMTKCenterlines	Segmentation	Centerline com	
<input checked="" type="checkbox"/>		VMTKEasyLevelSetSegmentation	Segmentation	Easier interface	
<input checked="" type="checkbox"/>		VMTKLevelSetSegmentation	Segmentation	Interactive Leve	
			Library	The Vascular Iv	
			Filtering	Vessel Enhanc	

Download & Install   Uninstall

< Back   Next >   Finish   Cancel

Click "Download & Install"



# Installing VMTK in 3D Slicer

3D Slicer Version 3.5 Alpha 1.0

Extension Management Wizard

Select extensions, then click uninstall to remove them from your version of 3D Slicer, or click download to retrieve them.

Select	Status	Name	Category	Description	Home
<input type="checkbox"/>		PythonSampleScriptedModule	Developer Tools	This is an exam	
<input type="checkbox"/>		RobustStatisticsSegModule	Segmentation	Skull sttipping 1	
<input type="checkbox"/>		SkullStripperModule	Segmentation	Skull sttipping 1	
<input type="checkbox"/>		TclSampleScriptedModule	Developer Tools	This is an exam	
<input checked="" type="checkbox"/>		VMTKCenterlines	Segmentation	Centerline com	
<input checked="" type="checkbox"/>		VMTKEasyLevelSetSegmentation	Segmentation	Easier interface	
<input checked="" type="checkbox"/>		VMTKLevelSetSegmentation	Segmentation	Interactive Leve	
<input checked="" type="checkbox"/>		VmtkSlicerModule	Library	The Vascular Iv	
<input checked="" type="checkbox"/>		VMTKVesselEnhancement	Filtering	Vessel Enhanc	

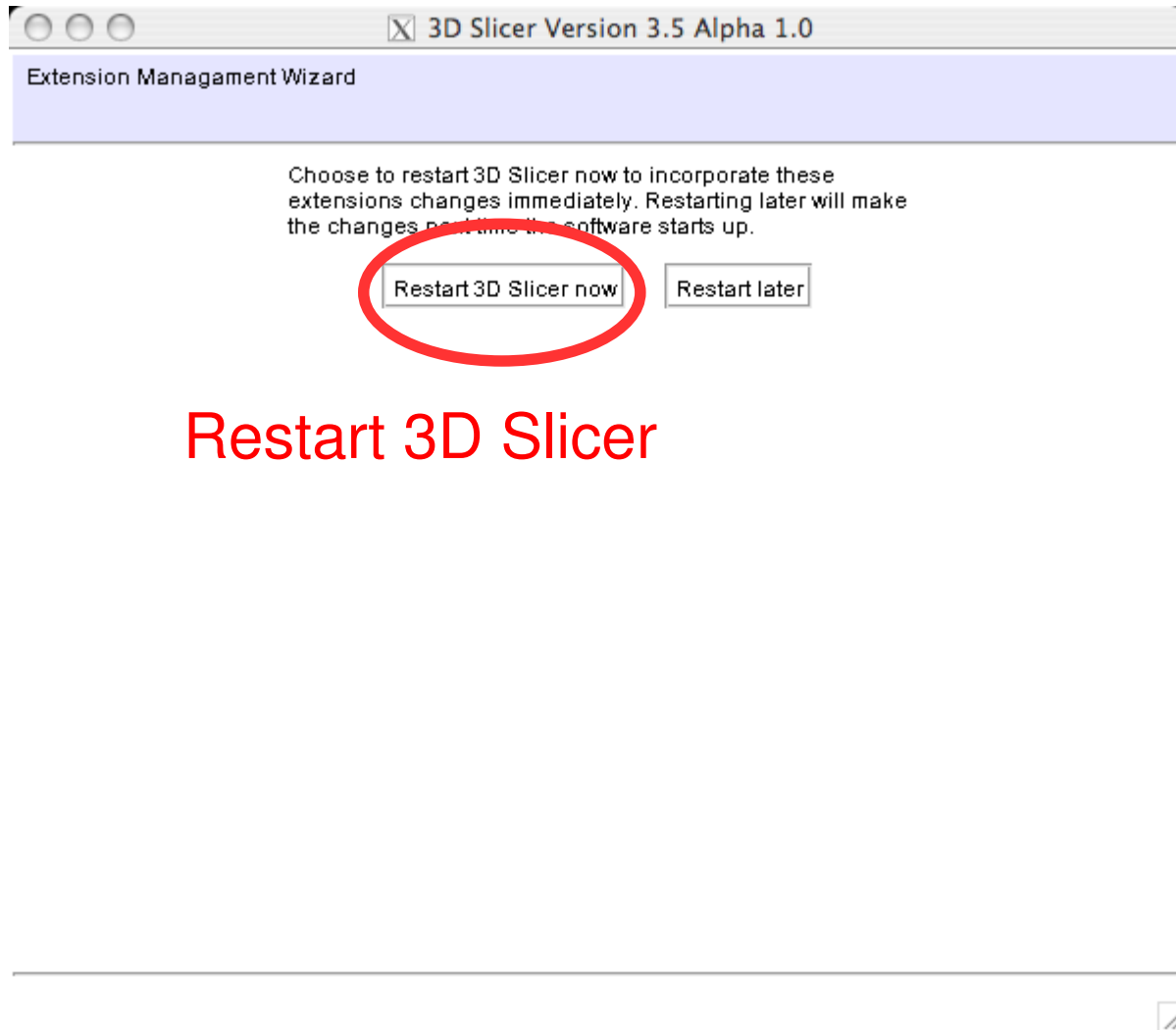
Download & Install Uninstall

Click "Next"

< Back Next > Finish Cancel



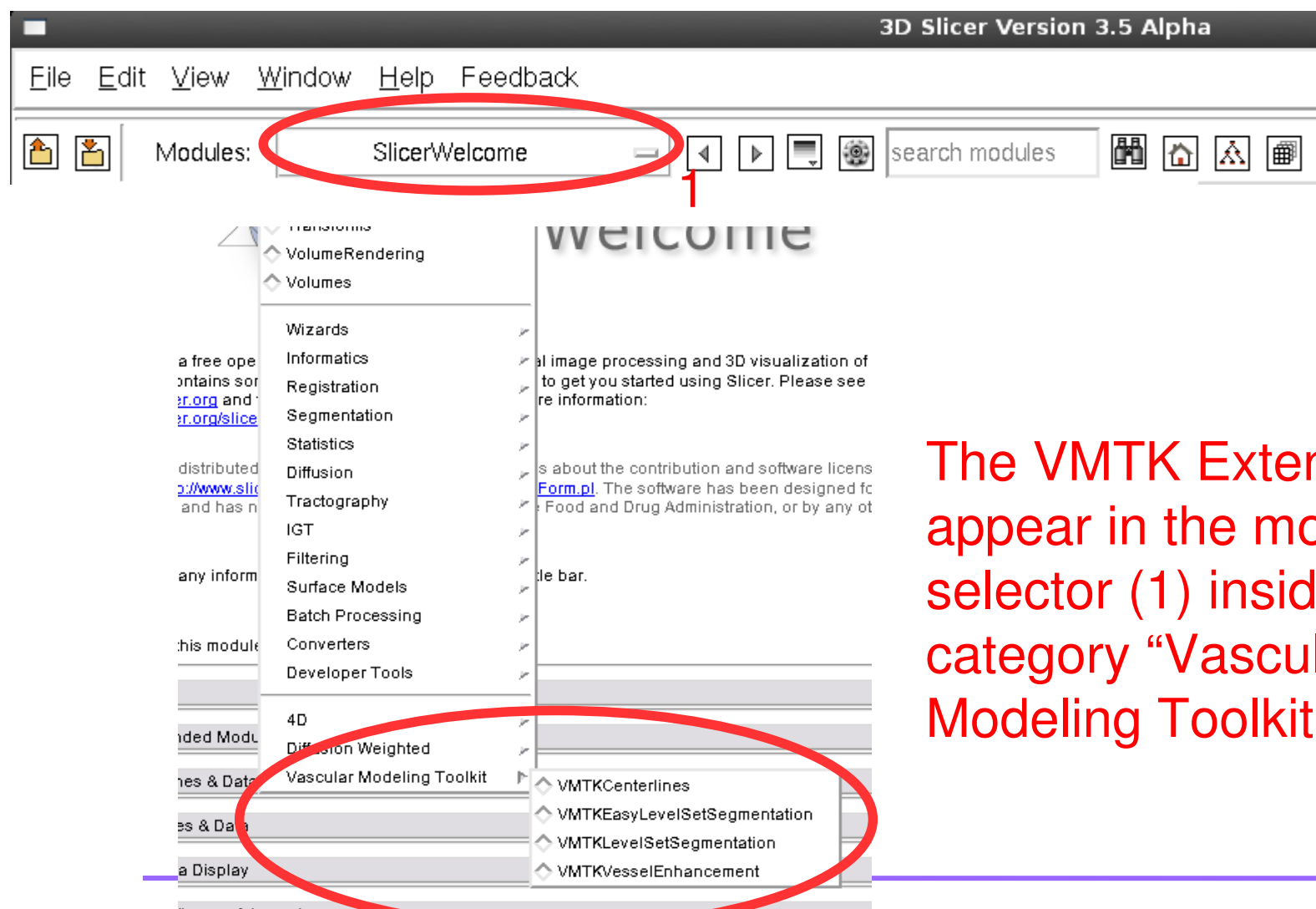
# Installing VMTK in 3D Slicer



Restart 3D Slicer

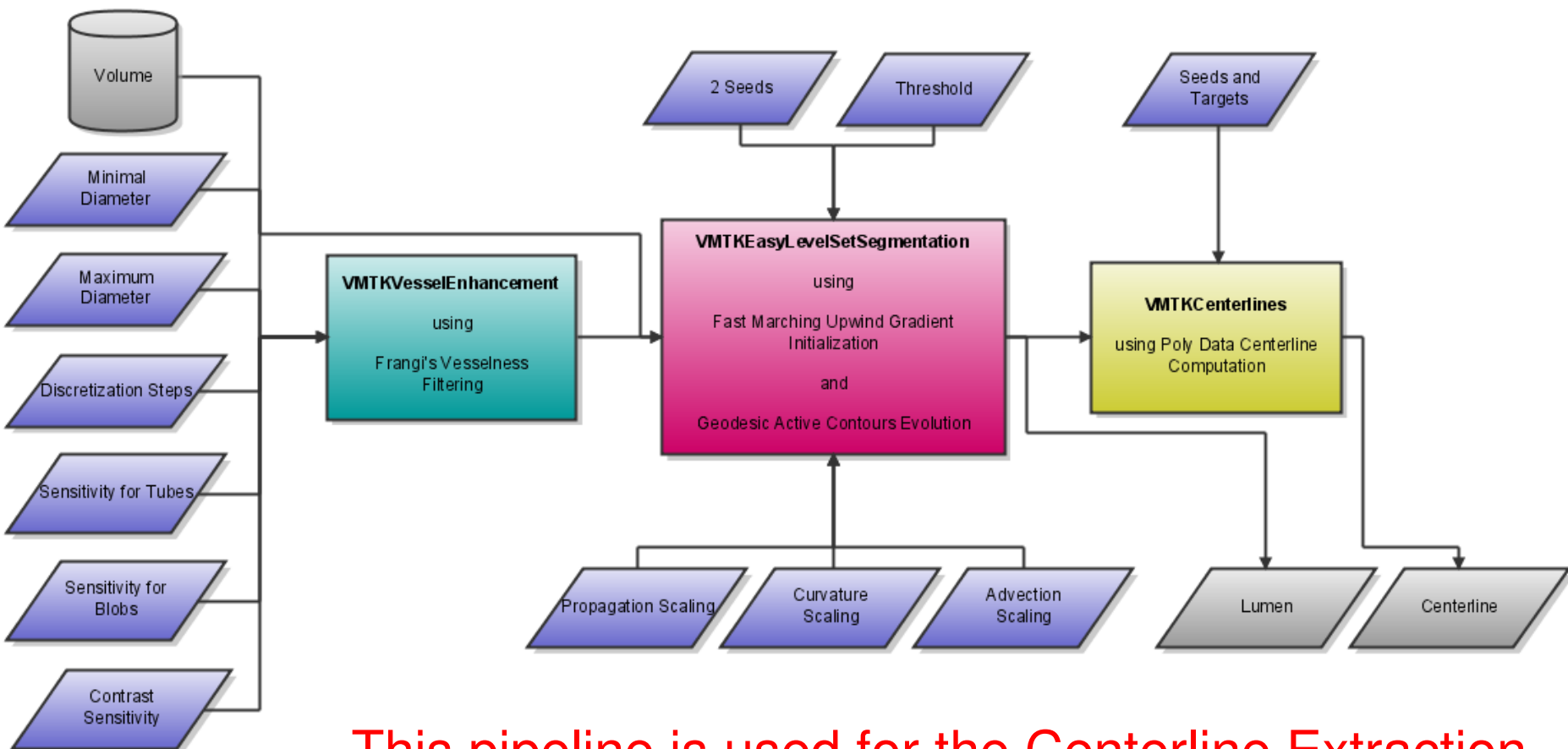


# Installing VMTK in 3D Slicer

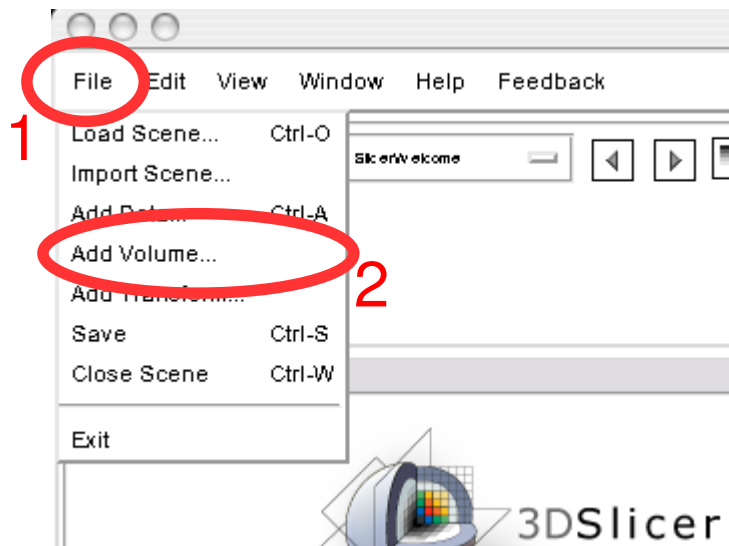


The VMTK Extensions appear in the modules selector (1) inside the category “Vascular Modeling Toolkit”

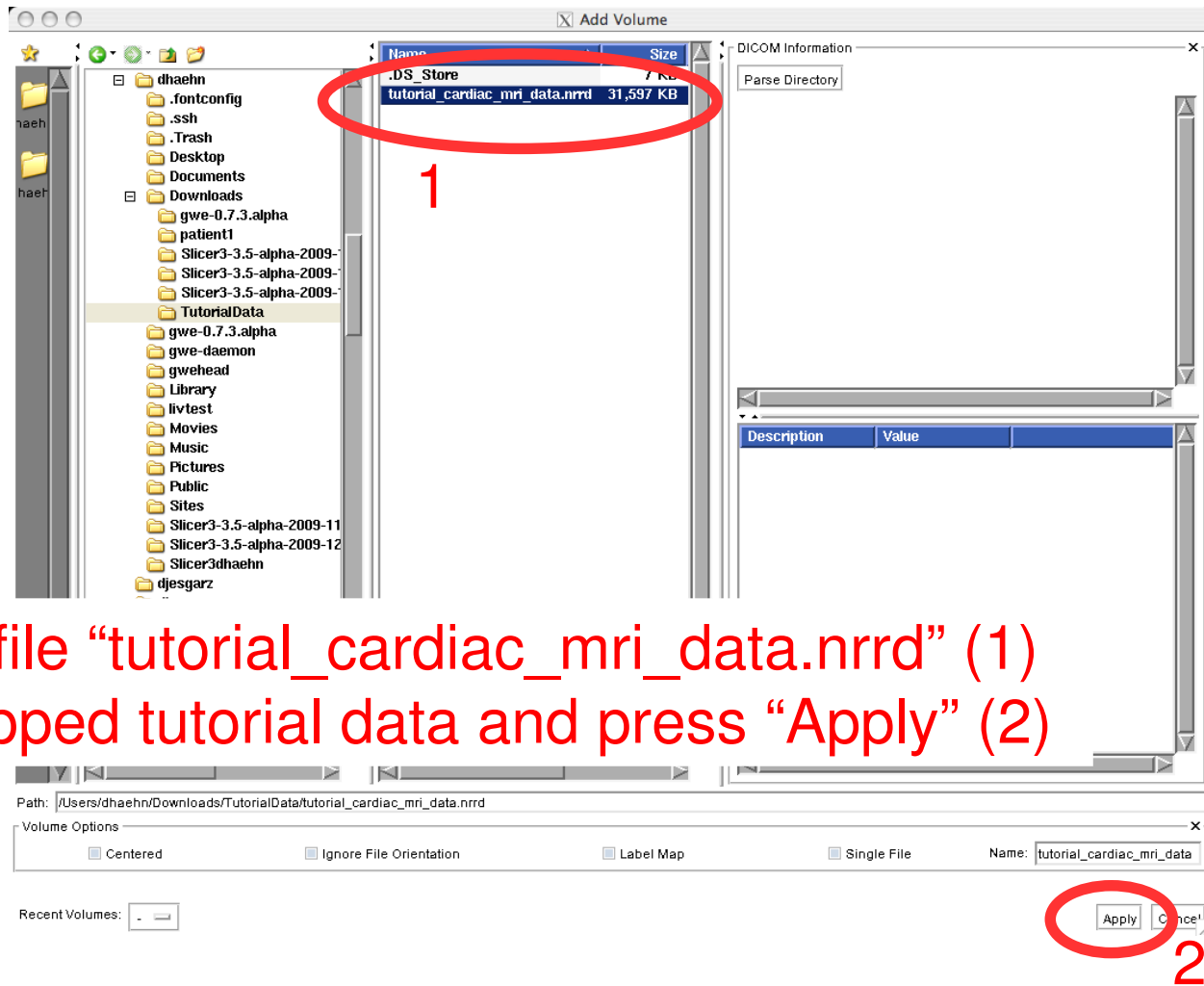
# The Pipeline



This pipeline is used for the Centerline Extraction.

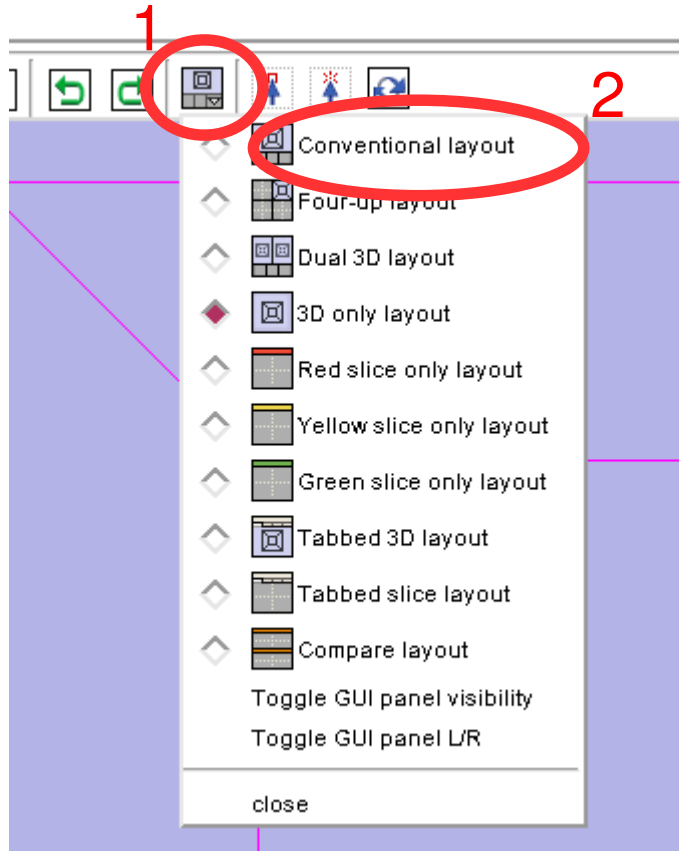


To load the tutorial data, choose the “File” menu (1) and select “Add Volume...” (2)



Select the file “tutorial\_cardiac\_mri\_data.nrrd” (1)  
of the unzipped tutorial data and press “Apply” (2)

# Loading Data



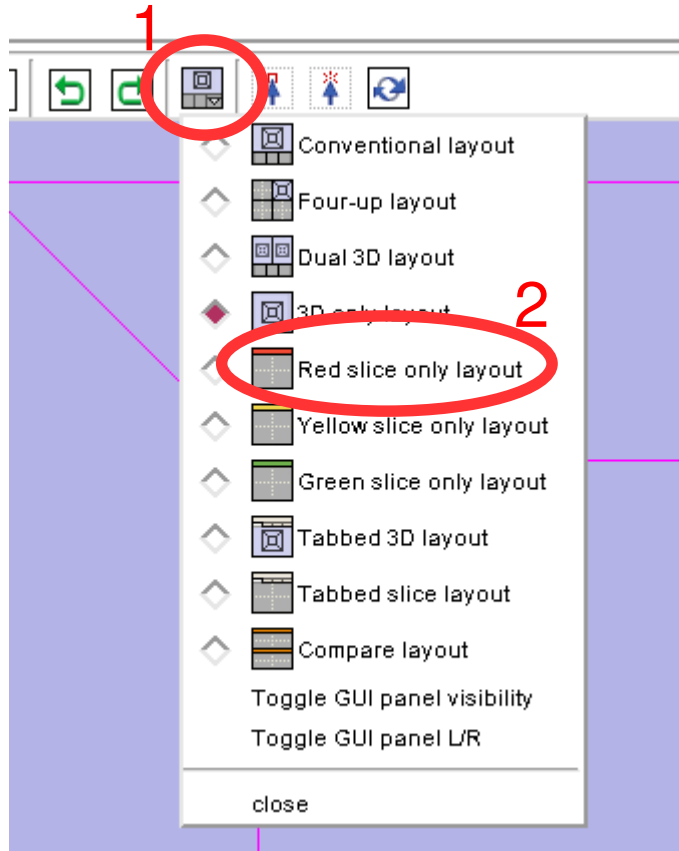
Use the layout selector (1) to switch to the “Conventional layout” (2)



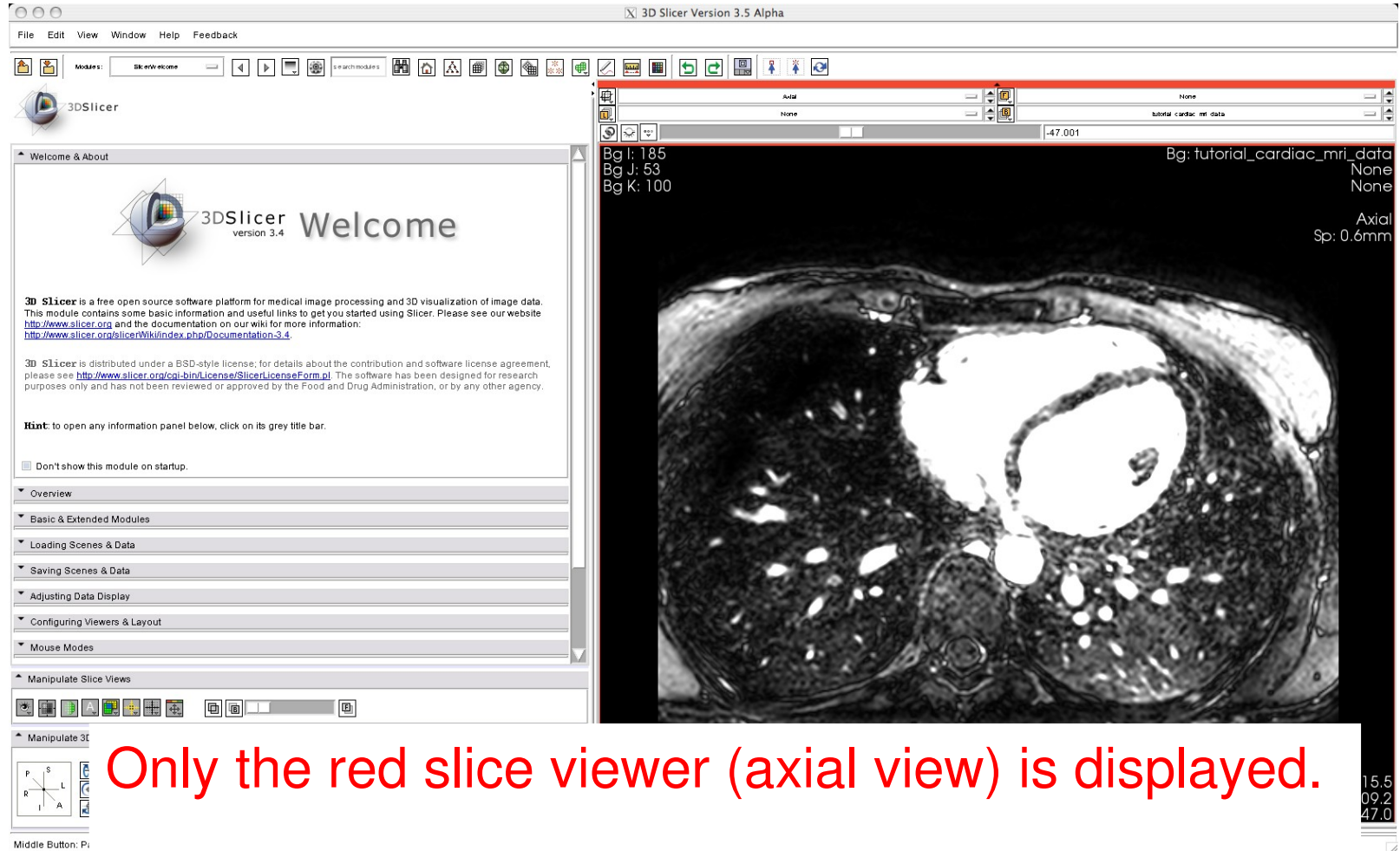
The 2D slice viewers show the loaded volume.



# Loading Data



Use the layout selector (1) to switch to the “Red slice only layout” (2)




3D Slicer Version 3.5 Alpha

File Edit View Window Help Feedback

Modules: SlicerWelcome

3DSlicer

Welcome & About

 **3DSlicer** Welcome  
version 3.4

**3D Slicer** is a free open source software platform for medical image processing and 3D visualization of image data. This module contains some basic information and useful links to get you started using Slicer. Please see our website <http://www.slicer.org> and the documentation on our wiki for more information: <http://www.slicer.org/wiki/index.php/Documentation3.4>.

**3D Slicer** is distributed under a BSD-style license; for details about the contribution and software license agreement, please see <http://www.slicer.org/cgi-bin/license/SlicerLicenseForm.pl>. The software has been designed for research purposes only and has not been reviewed or approved by the Food and Drug Administration, or by any other agency.

**Hint:** to open any information panel below, click on its grey title bar.

Don't show this module on startup.

Overview

Basic & Extended Modules

Loading Scenes & Data

Saving Scenes & Data

Adjusting Data Display

Configuring Viewers & Layout

Mouse Modes

Manipulate Slice Views

Manipulate 3D

Middle Button: P

None

tutorial\_cardiac\_mri\_data

-47.001

Bg I: 185  
Bg J: 53  
Bg K: 100

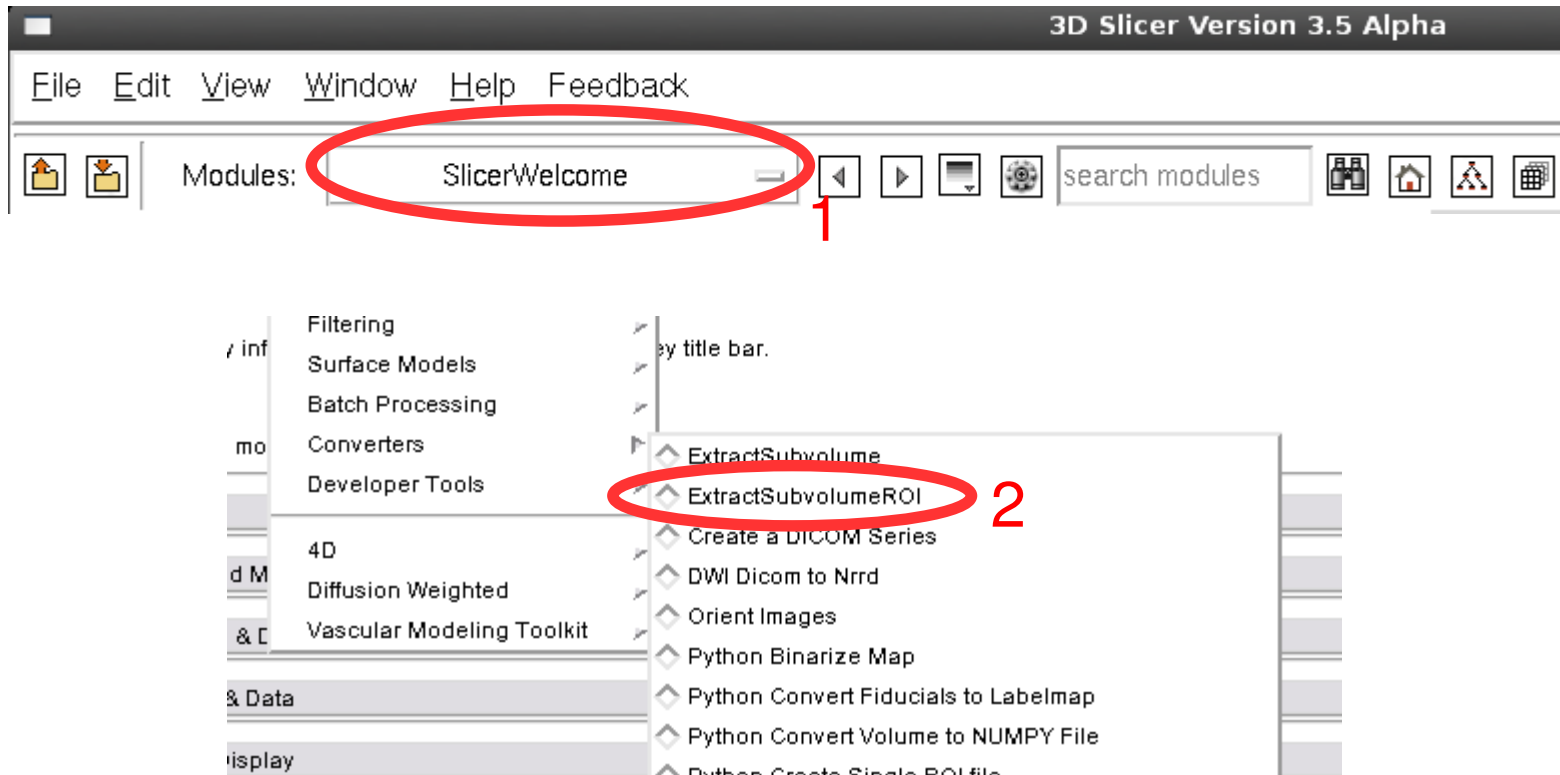
Bg: tutorial\_cardiac\_mri\_data  
None  
None

Axial  
Sp: 0.6mm

**Only the red slice viewer (axial view) is displayed.**

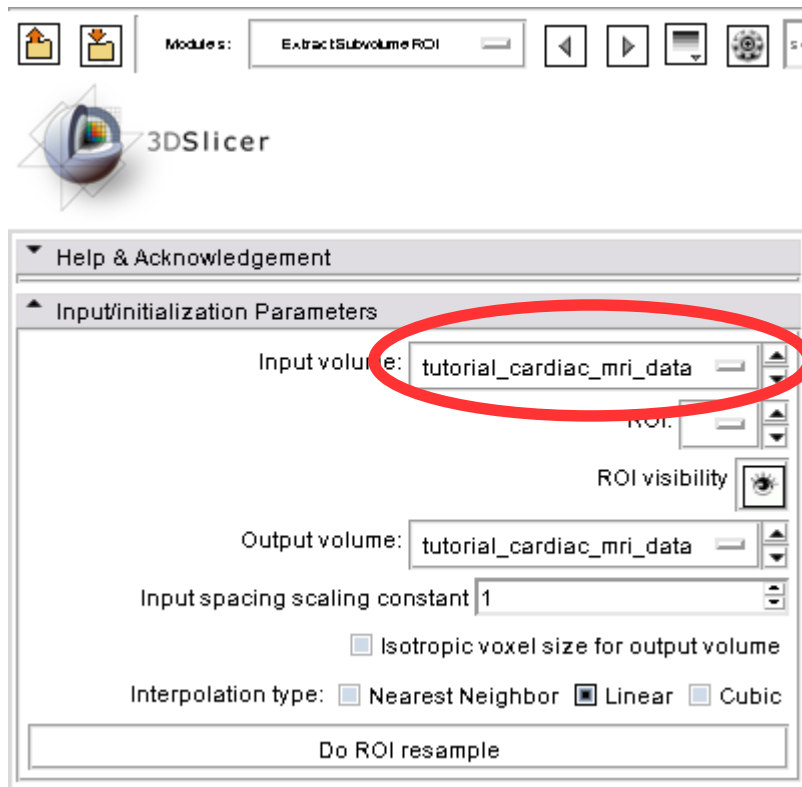
15.5  
09.2  
47.0

# Extracting the ROI



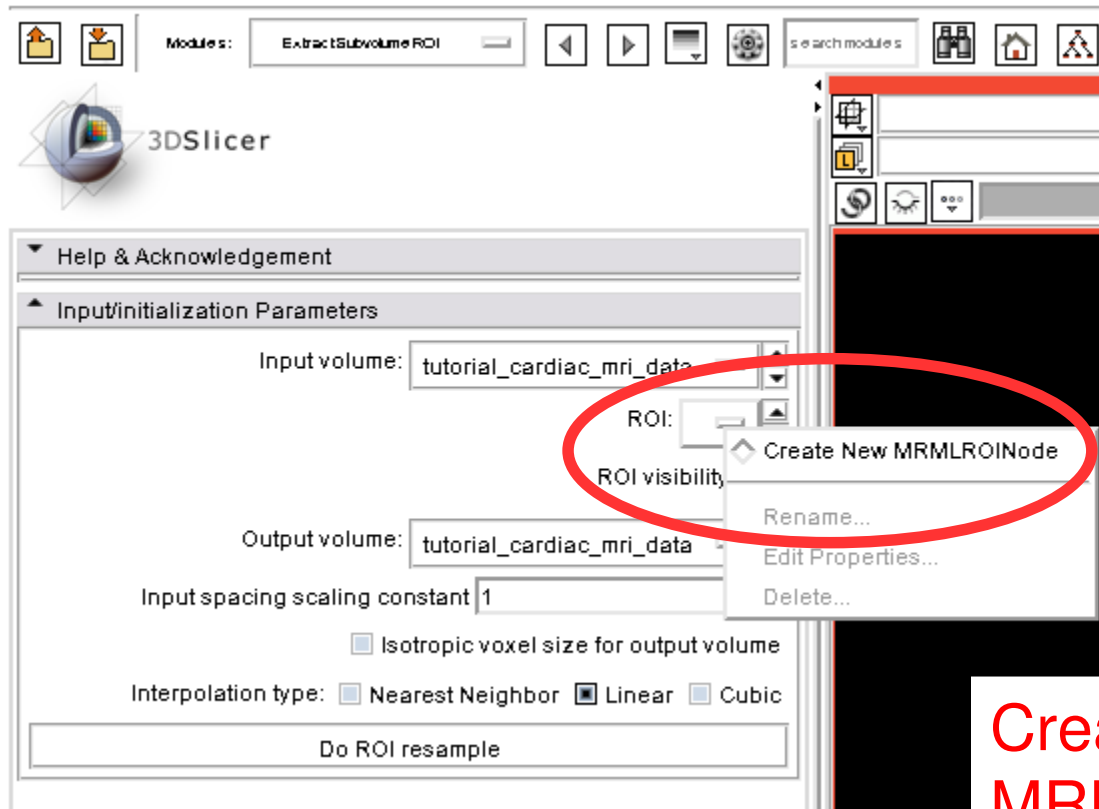
Use the modules selector (1) to start the “ExtractSubvolumeROI” (2) module

# Extracting the ROI



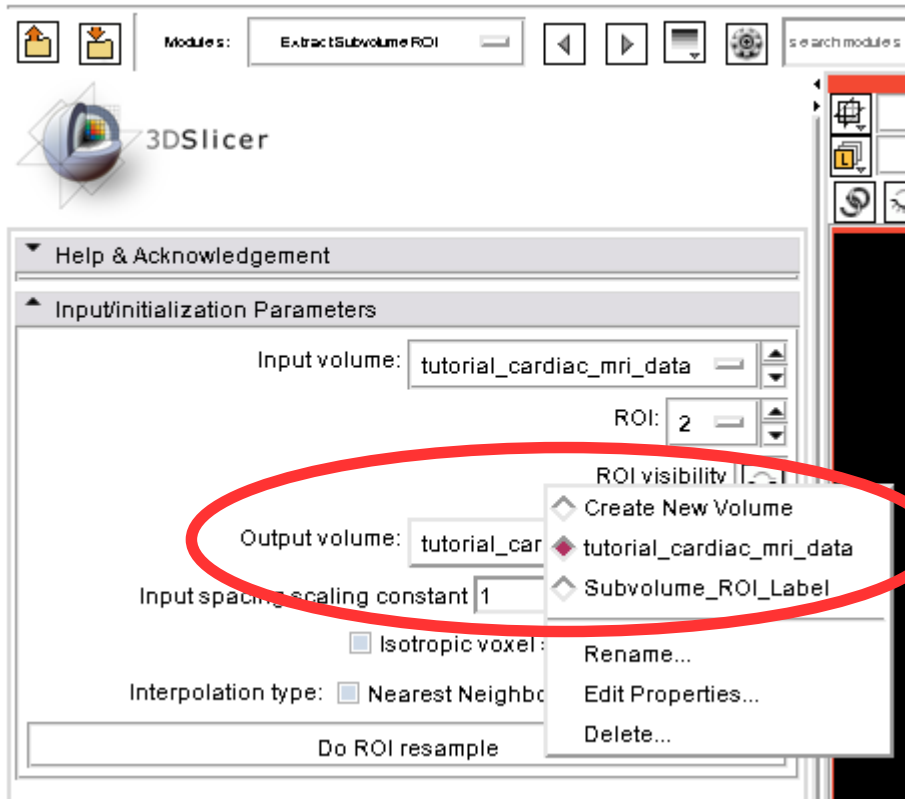
This panel now appears. Be sure that the “Input volume” is the loaded tutorial data.

# Extracting the ROI



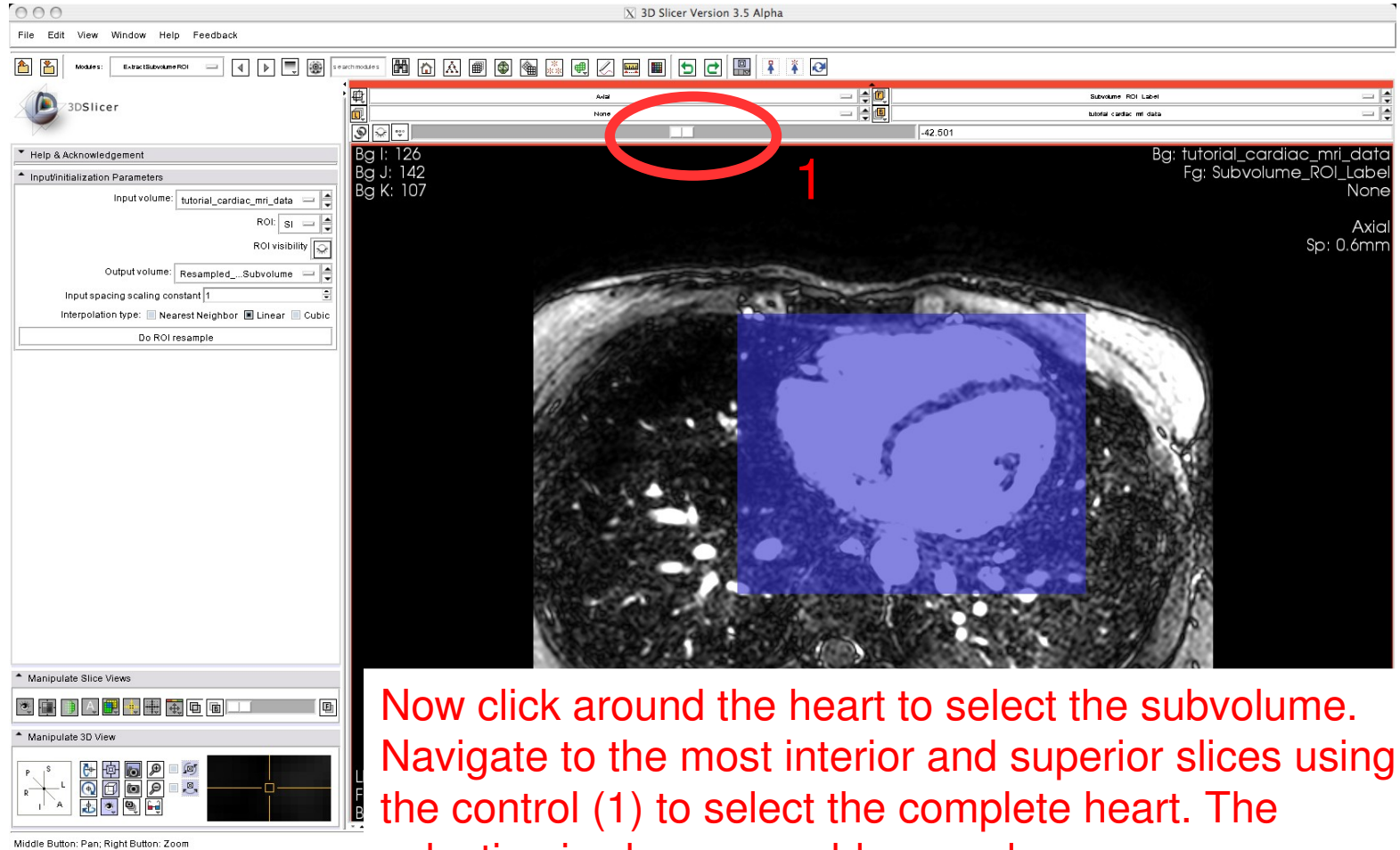
The screenshot shows the 3DSlicer interface with the 'ExtractSubvolume ROI' module selected. The 'Input/Initialization Parameters' section is visible, showing 'Input volume: tutorial\_cardiac\_mri\_data', 'Output volume: tutorial\_cardiac\_mri\_data', and 'Input spacing scaling constant: 1'. The 'ROI' dropdown menu is open, and 'Create New MRMLROINode' is highlighted with a red circle. A red text box at the bottom right says 'Create a new MRMLROINode'.

# Extracting the ROI



Create a new Volume  
as “Output volume”

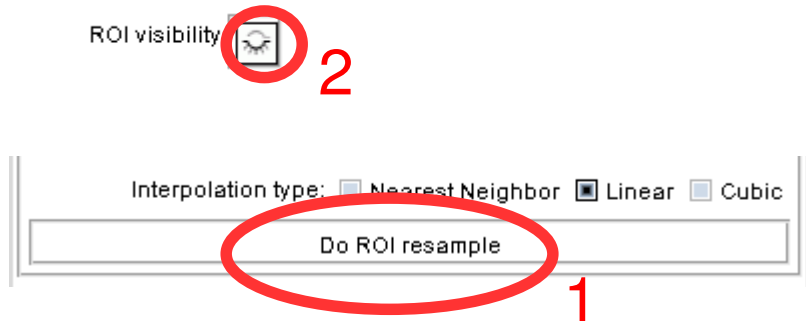
# Extracting the ROI





# Extracting the ROI

---



Click “Do ROI resample” (1) to extract the subvolume and click toggle the “ROI visibility” (2) to hide the blue overlay

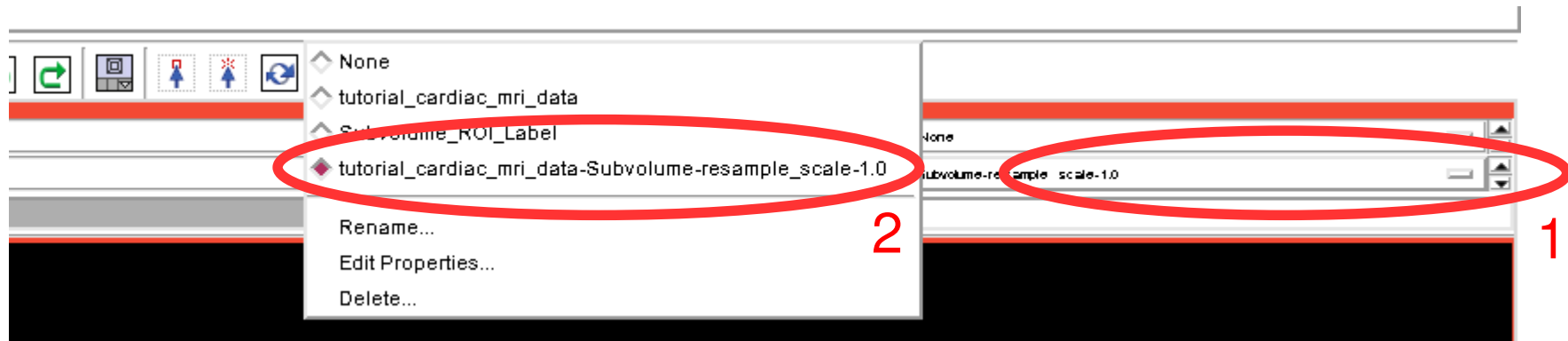
# *Extracting the ROI*

---



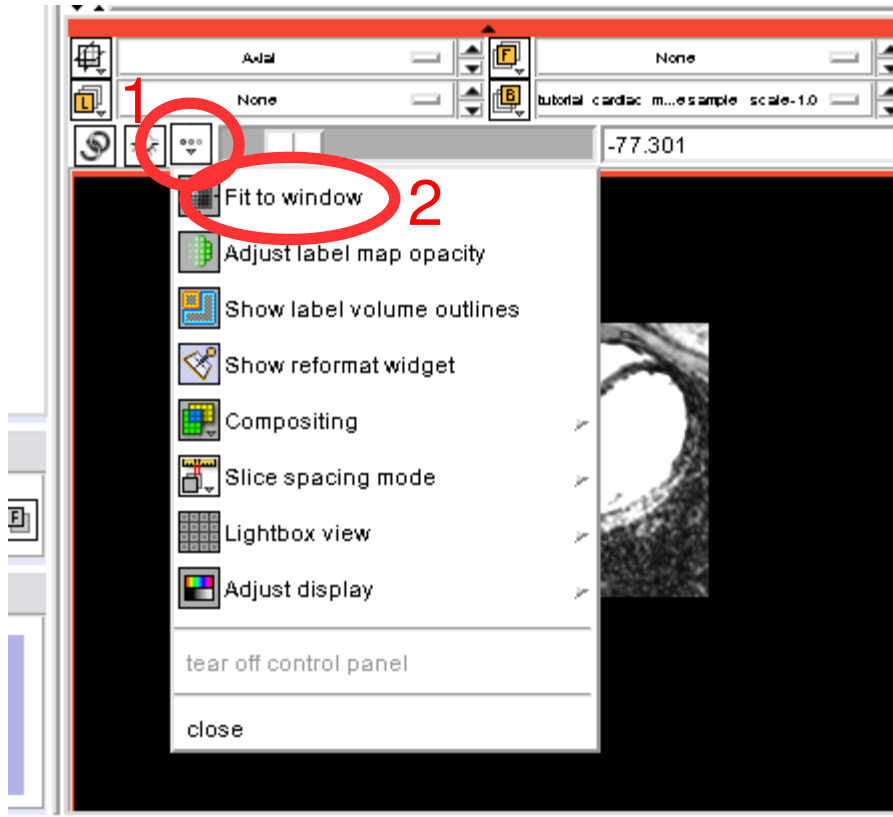
You can also directly load the prepared “tutorial\_cardiac\_mri\_data-Subvolume-resample\_scale-1.0.nrrd” file of the unzipped tutorial data to get the extracted subvolume (see the “Loading Data” section).

# Extracting the ROI



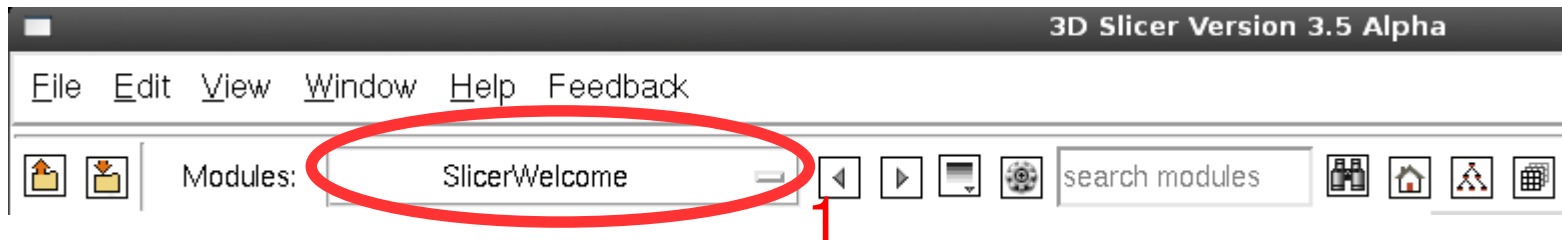
Select the extracted subvolume (2) in the red slice viewer by using the volume selector (1)

# Extracting the ROI



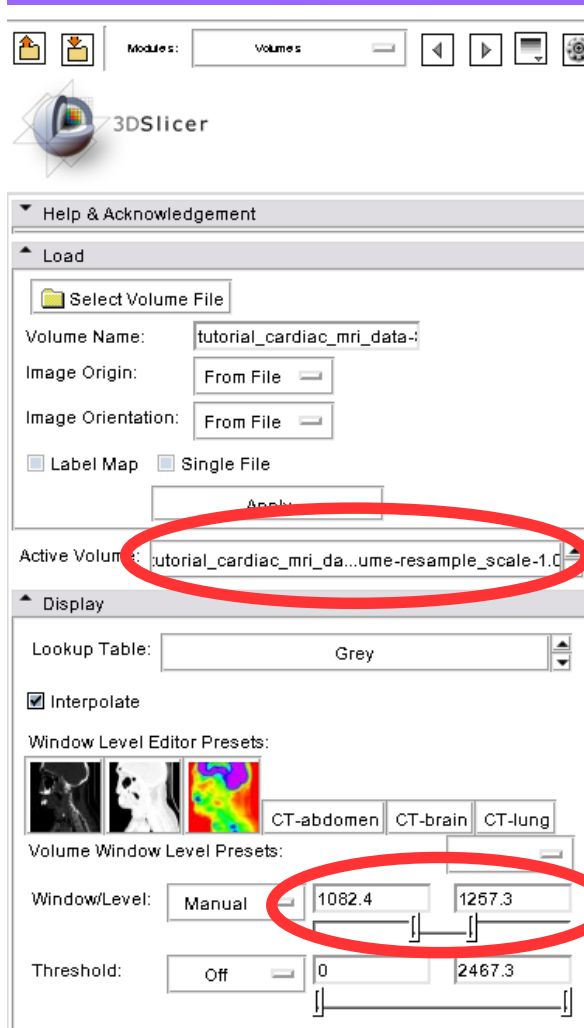
Fit the volume to the window by using the options icon (1) and selecting “Fit to window” (2)

# Extracting the ROI



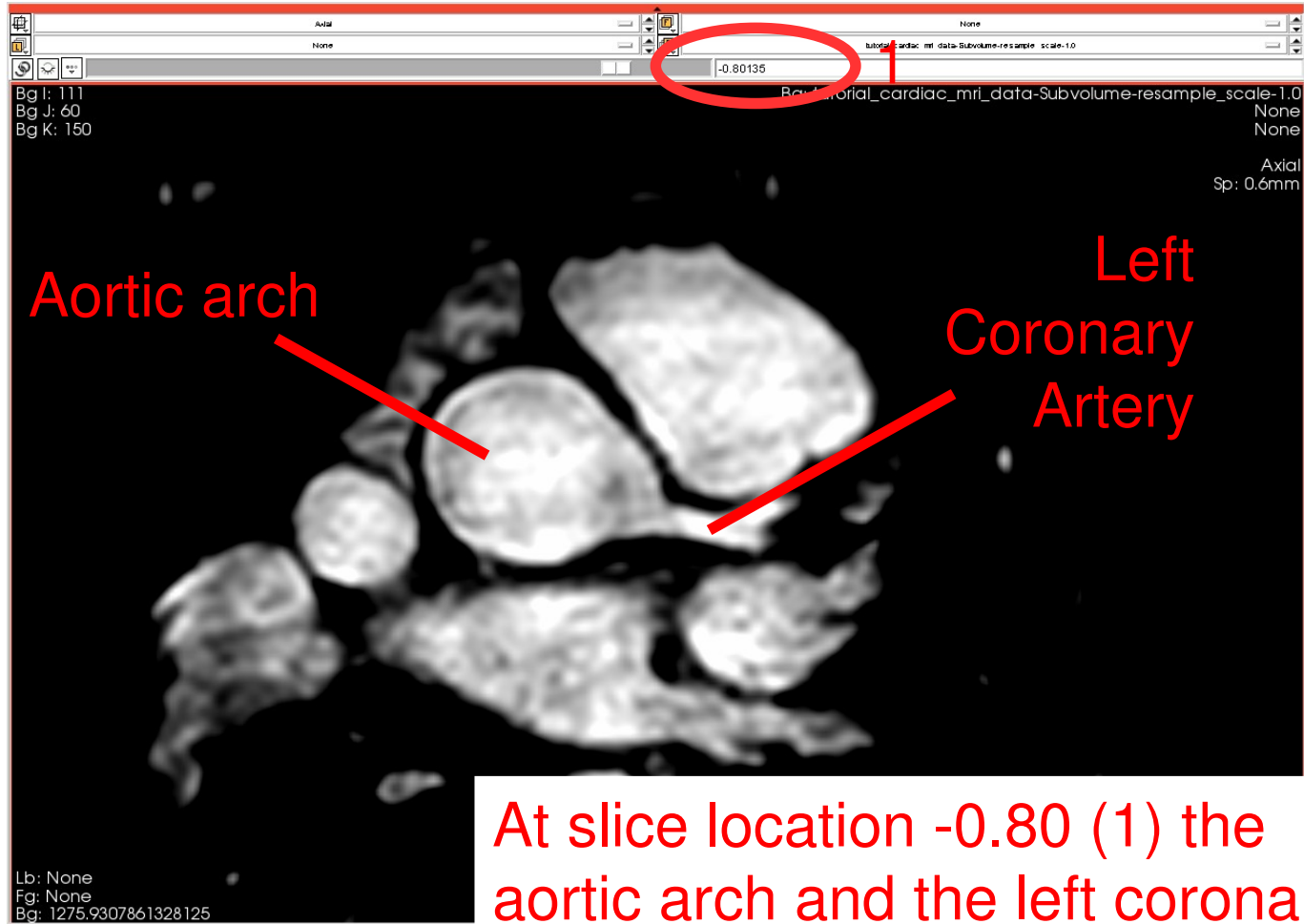
Use the modules selector (1) to navigate to the “Volumes” module (2)

# Extracting the ROI

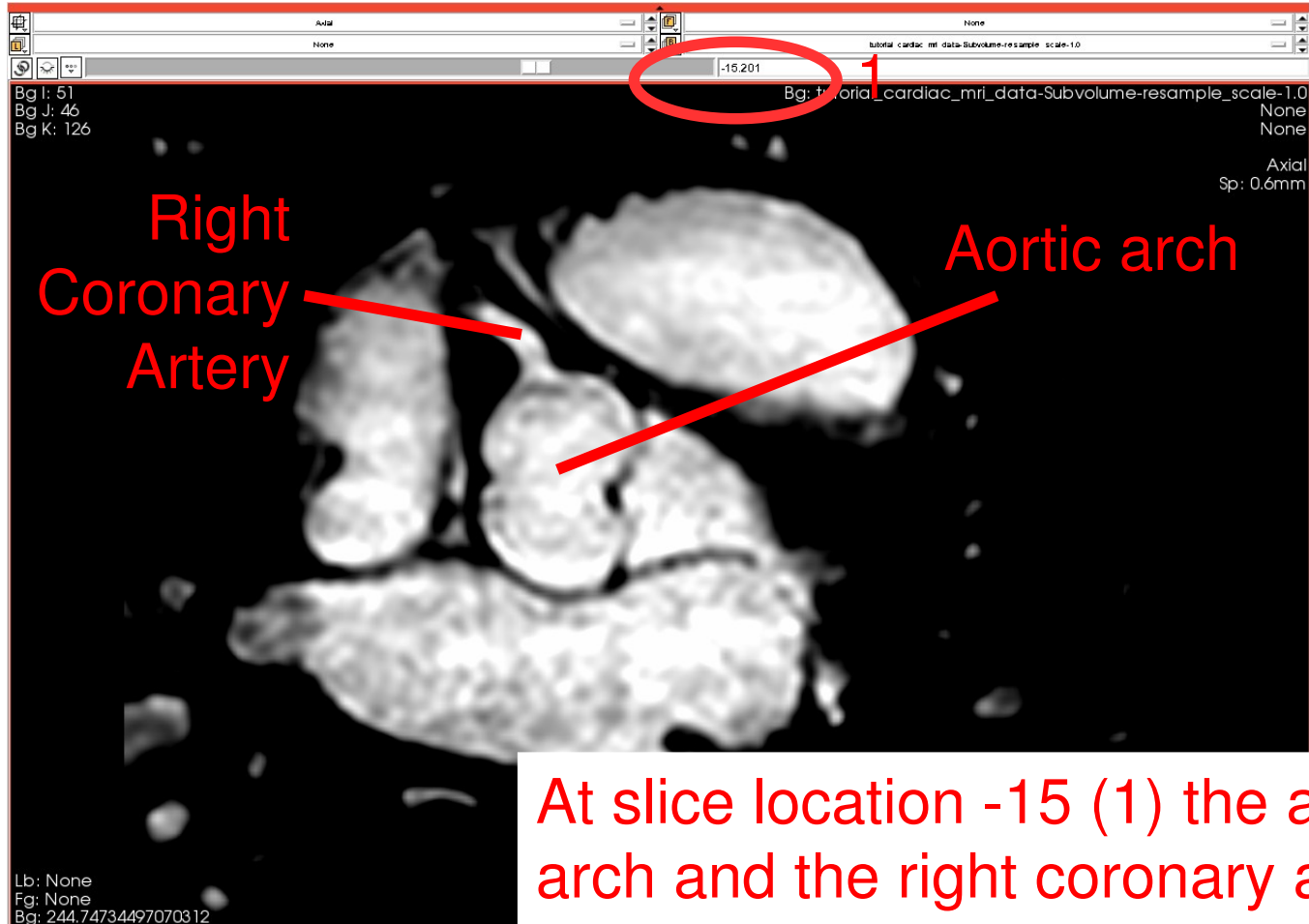


Be sure the extracted subvolume “tutorial\_cardiac\_mri\_data-Subvolume-resample\_scale-1.0” is the active Volume (1) and adjust the Window/Level setting to 1082 and 1257 (2) for better visualization

# Extracting the ROI

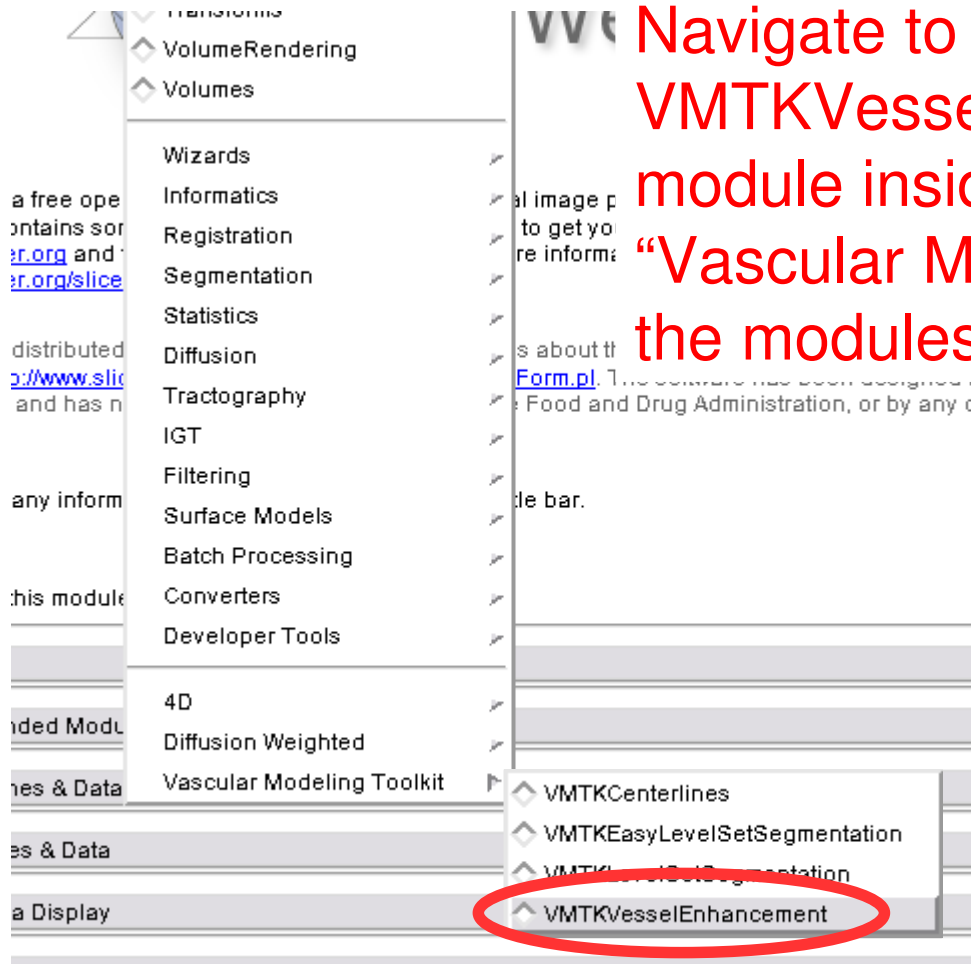


# Extracting the ROI



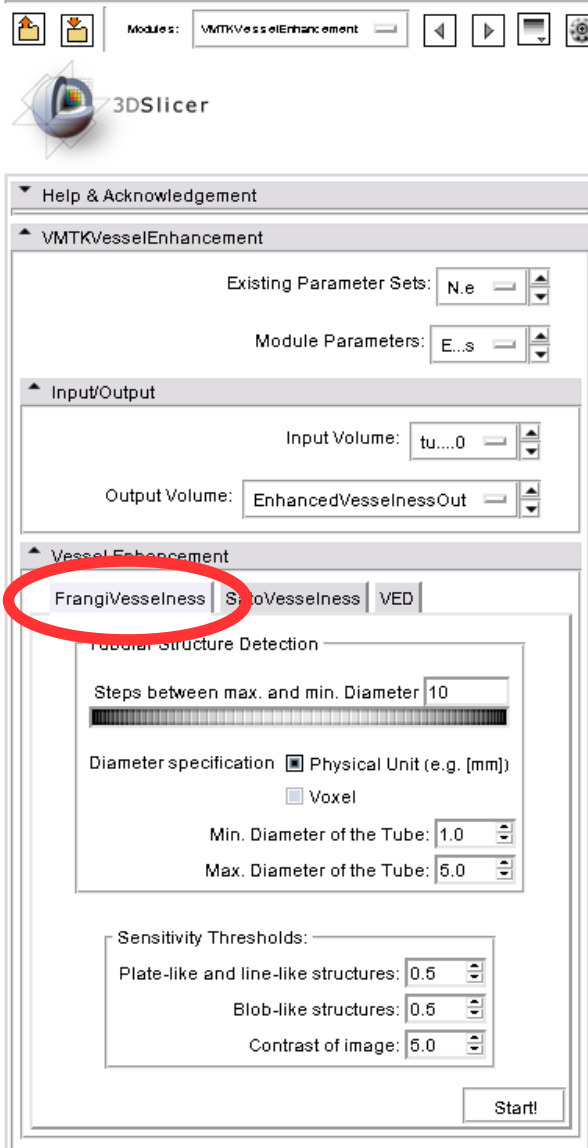


# Vesselness Filtering



Navigate to the VMTKVesselEnhancement module inside the category “Vascular Modeling Toolkit” using the modules selector

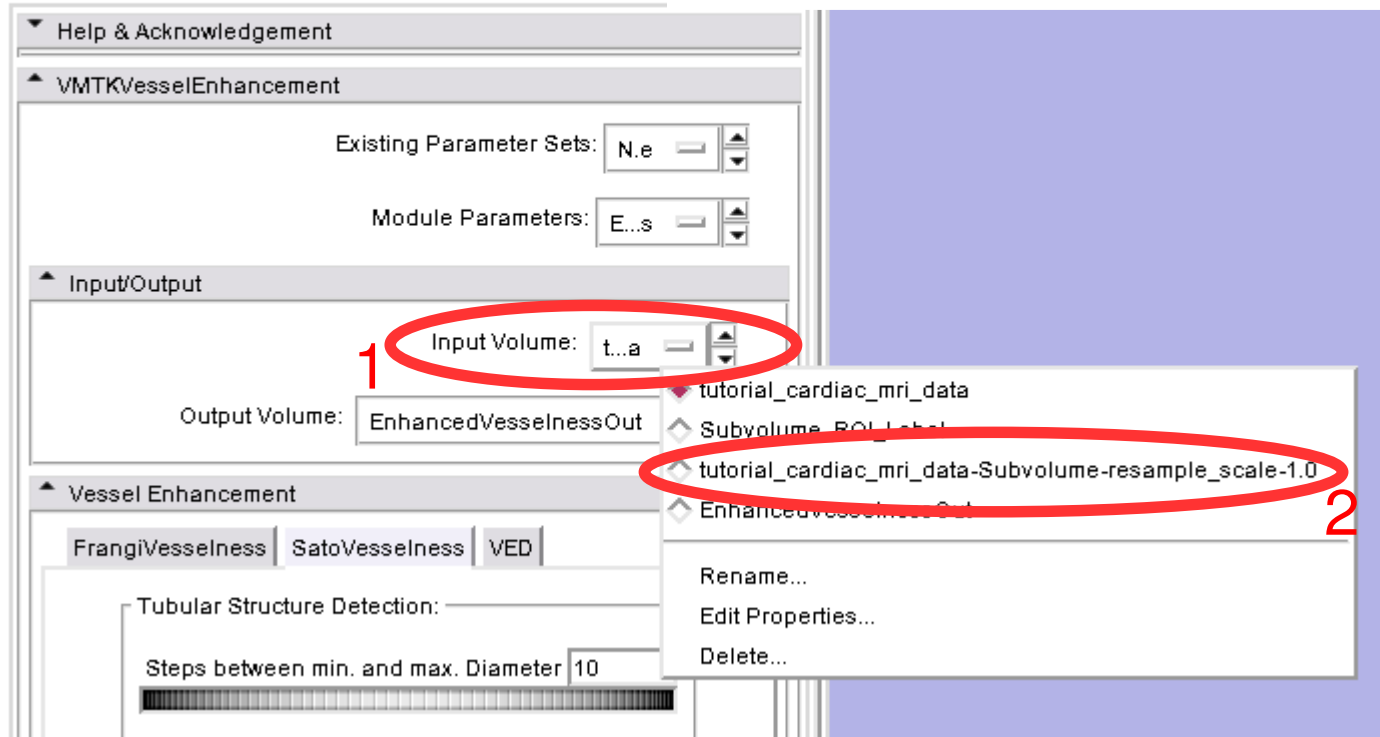
# Vesselness Filtering



This panel appears. Switch to “FrangiVesselness”.

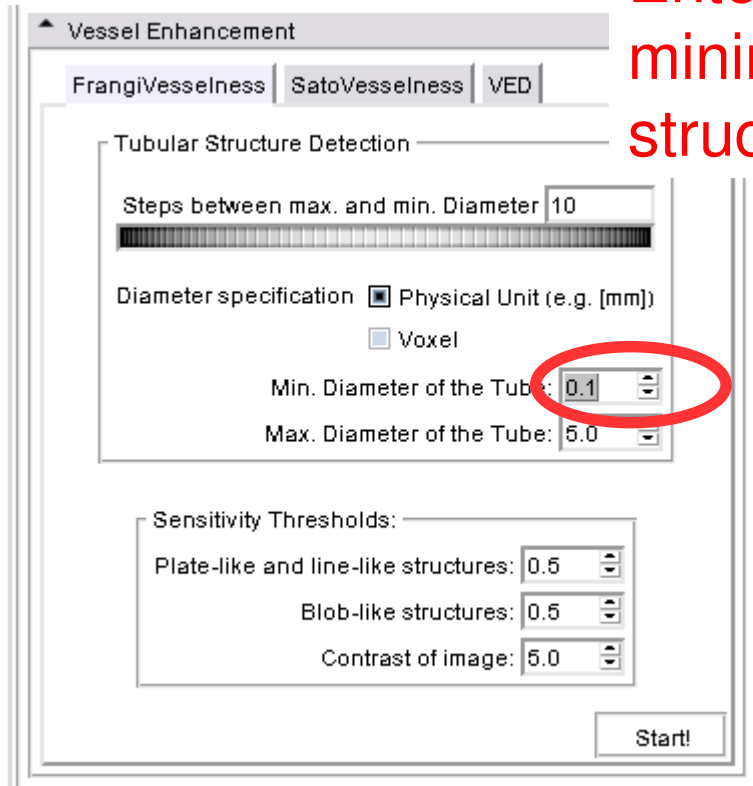
# Vesselness Filtering

Select the extracted subvolume (2) as the “Input Volume” (1)



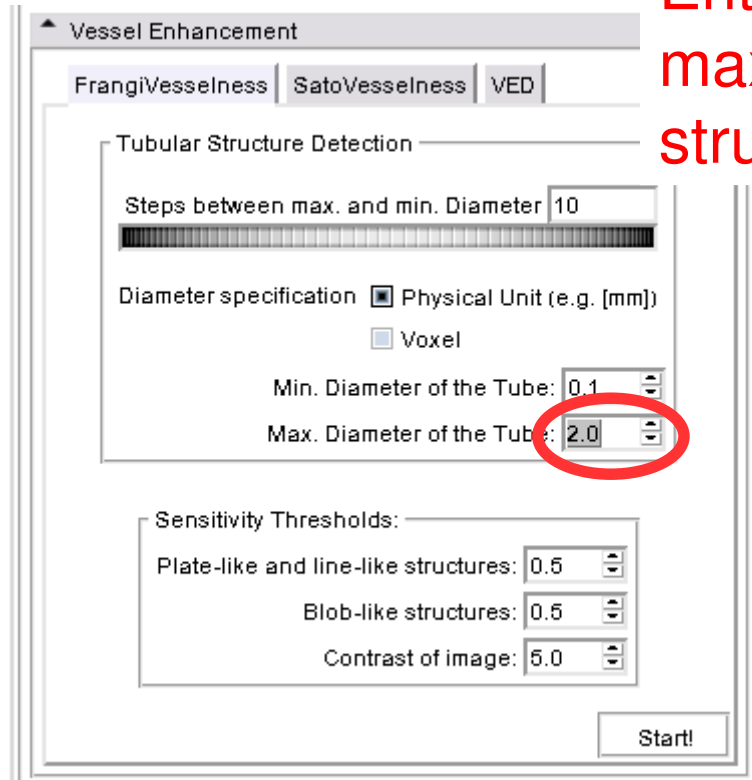
# Vesselness Filtering

Enter “0.1” (unit: mm) as the minimal diameter of tubular structures to detect



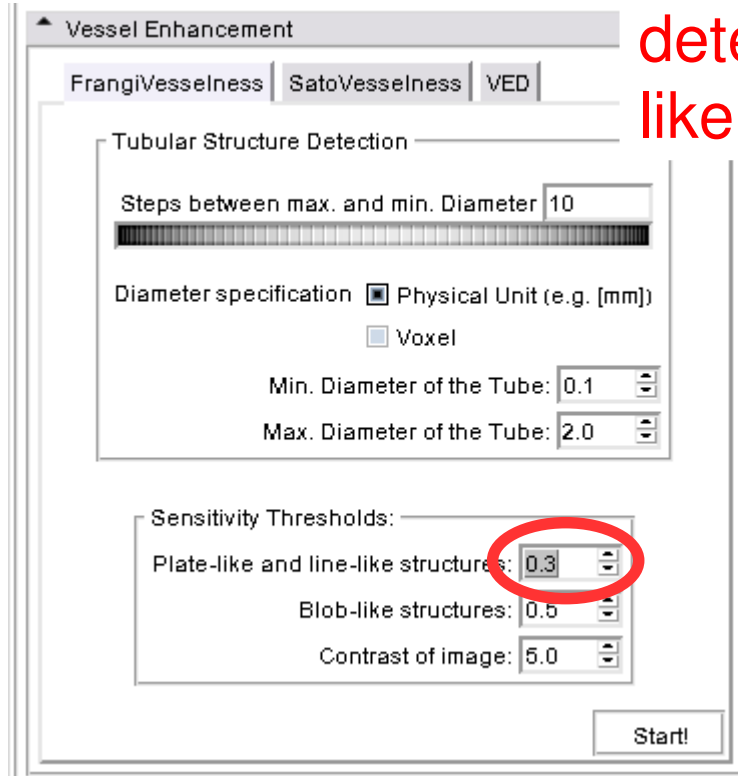
# Vesselness Filtering

Enter “2.0” (unit: mm) as the maximum diameter of tubular structures to detect



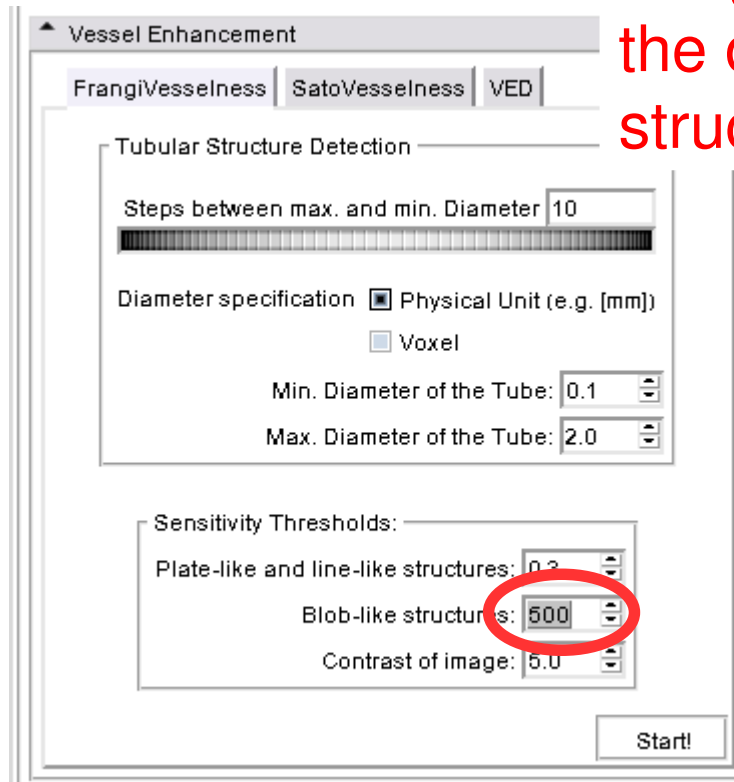
# Vesselness Filtering

Choose a low threshold of “0.3” to detect line-like rather than plate-like structures

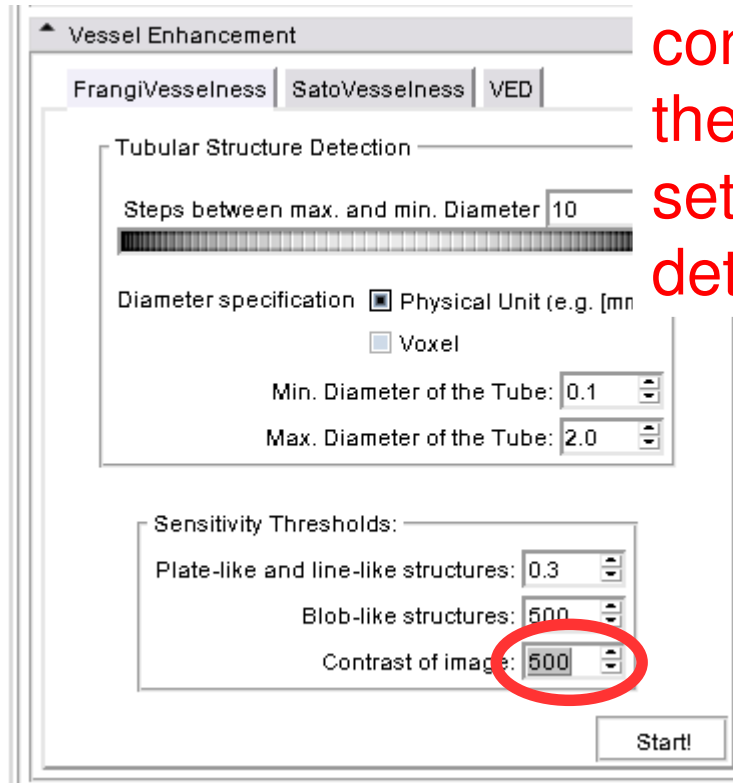


# Vesselness Filtering

A higher threshold of “500” limits the detection of blob-like structures



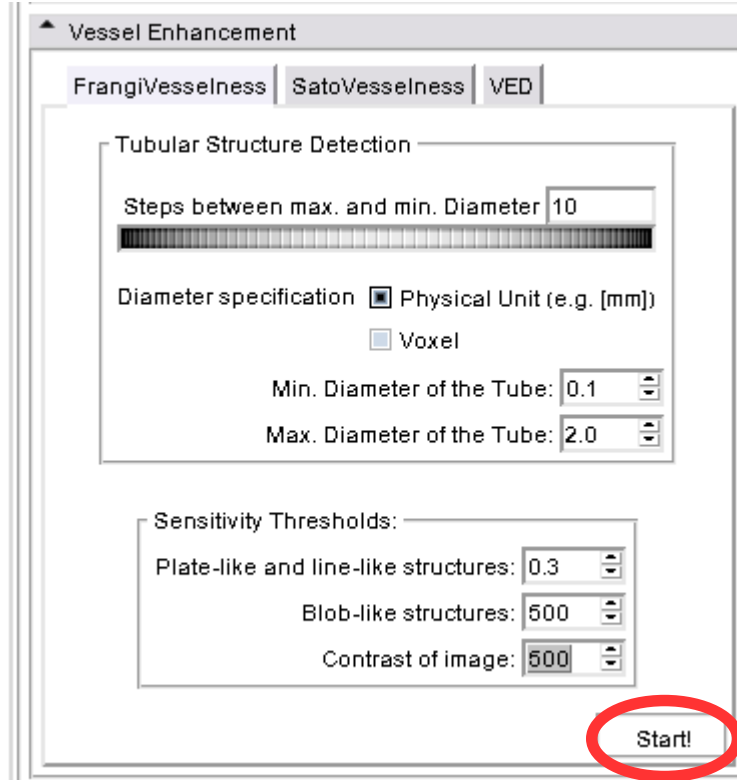
# Vesselness Filtering



The contrast of the vessels in comparison to the background in the tutorial data is very high, so set a higher threshold of “500” to detect only well visible structures



# Vesselness Filtering



Click “Start!”

# Vesselness Filtering

---

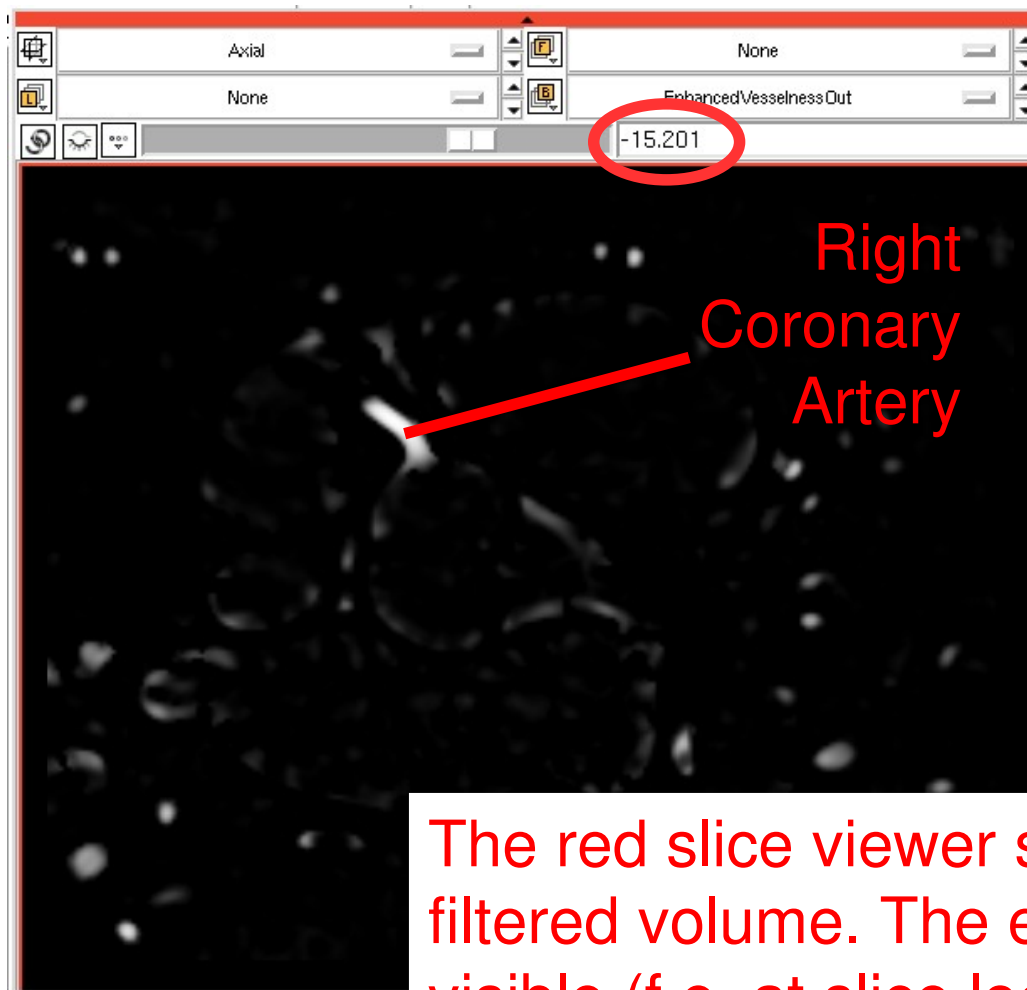


The filtering procedure takes approx. 6-10 minutes.



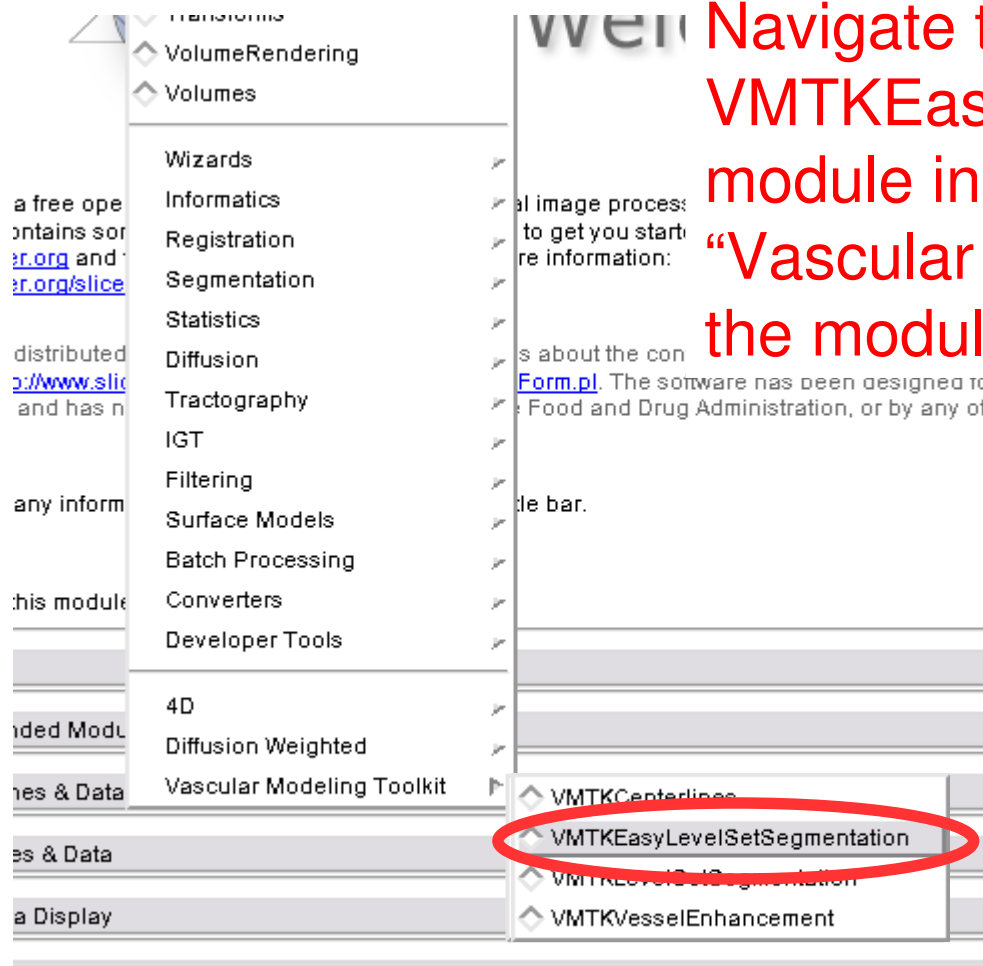
You can also directly load the prepared “EnhancedVesselnessOut.nrrd” file of the unzipped tutorial data to get the vesselness filtered volume (see the “Loading Data” section).

# Vesselness Filtering



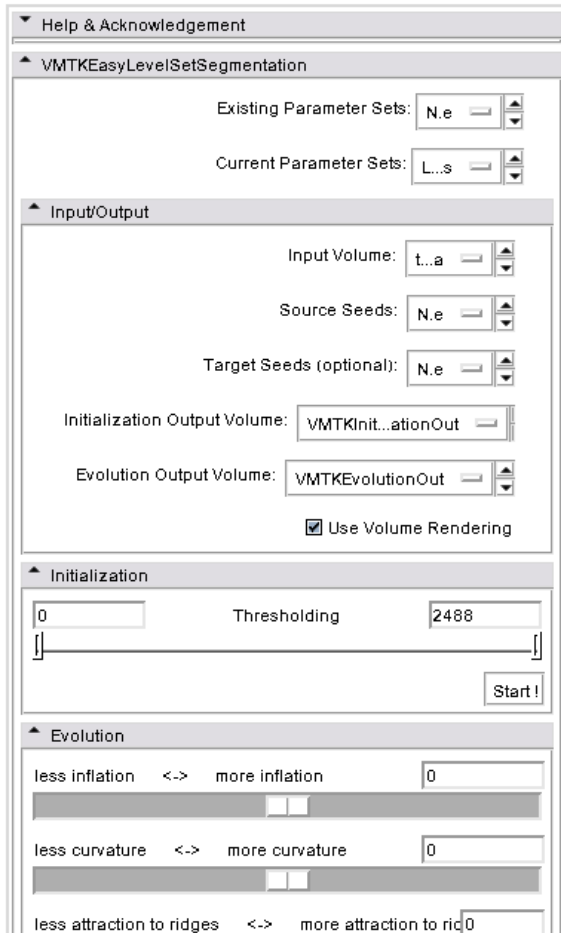
The red slice viewer shows the vesselness filtered volume. The enhanced tubes are visible (f.e. at slice location -15).

# Level Set Segmentation



Navigate to the  
VMTKEasyLevelSetSegmentation  
module inside the category  
“Vascular Modeling Toolkit” using  
the modules selector

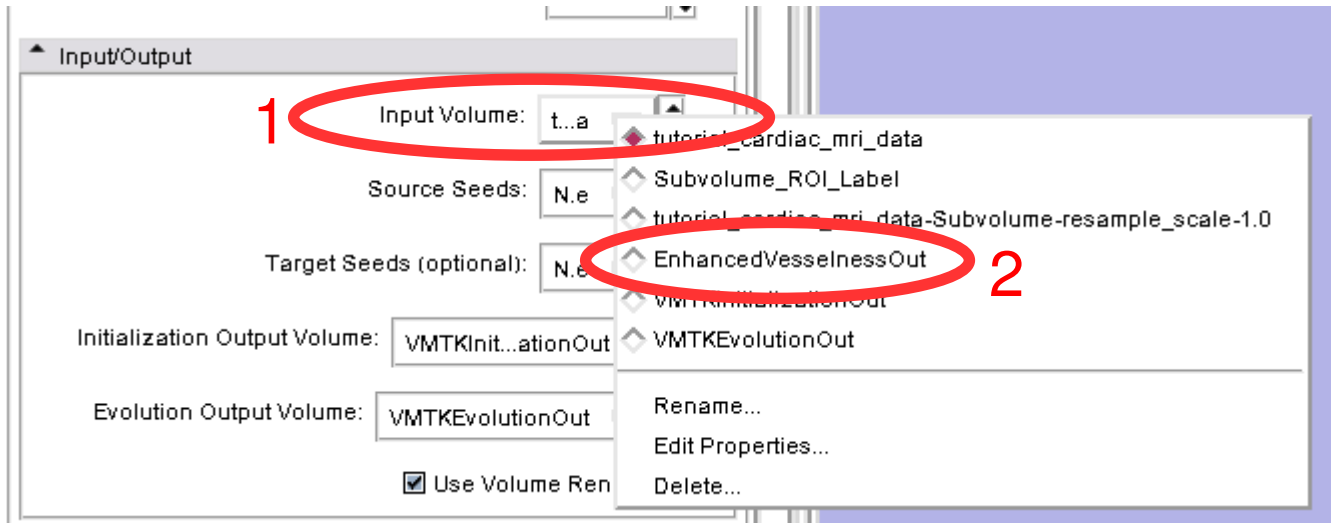
# Level Set Segmentation



This panel now appears.

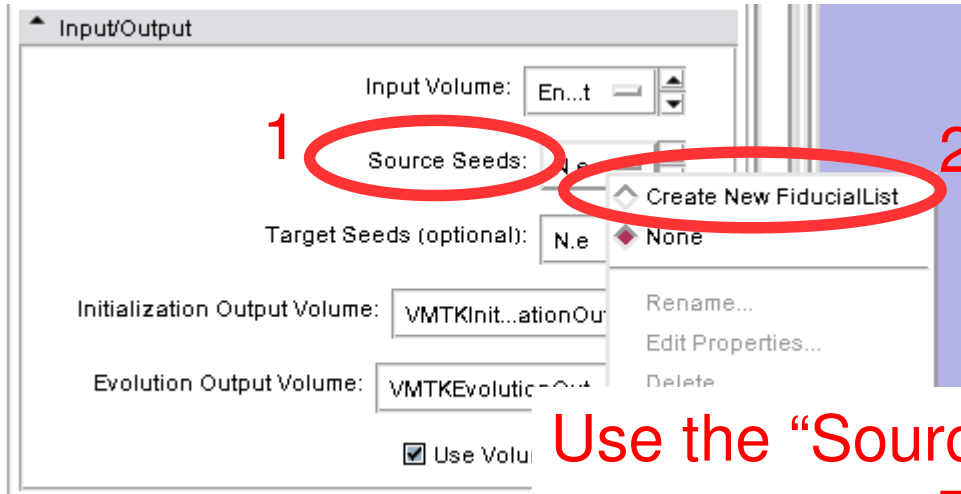
The Level Set Segmentation process consists of two steps: Initialization and Evolution

# Level Set Segmentation

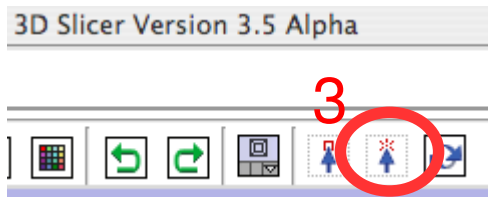


Select the “EnhancedVesselnessOut” volume (2) as the “Input Volume” (1)

# Level Set Segmentation

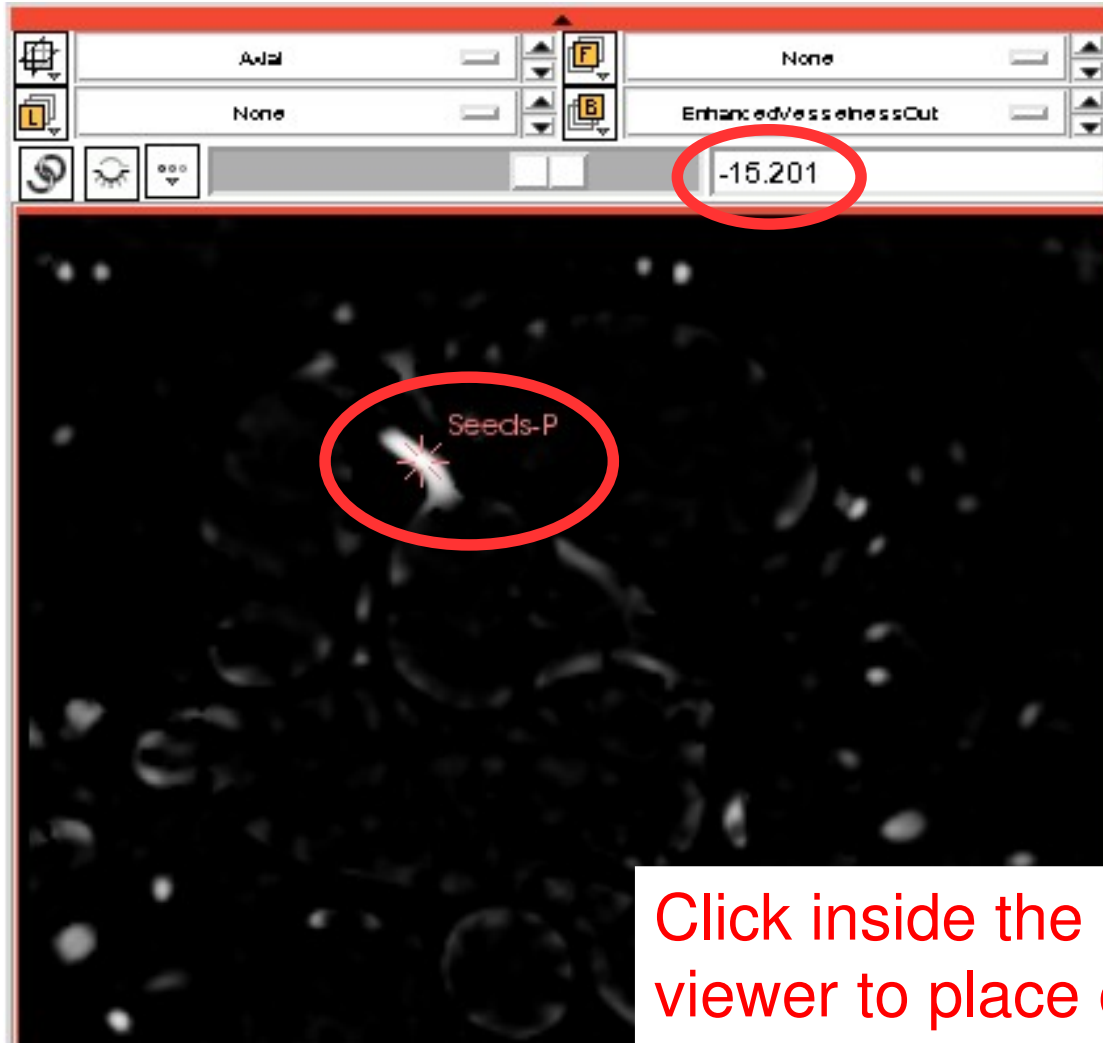


Use the “Source Seeds” selector (1) to create a new Fiducial List (2) which automatically becomes active



Switch to “Place” mode by using the icon (3) on the toolbar

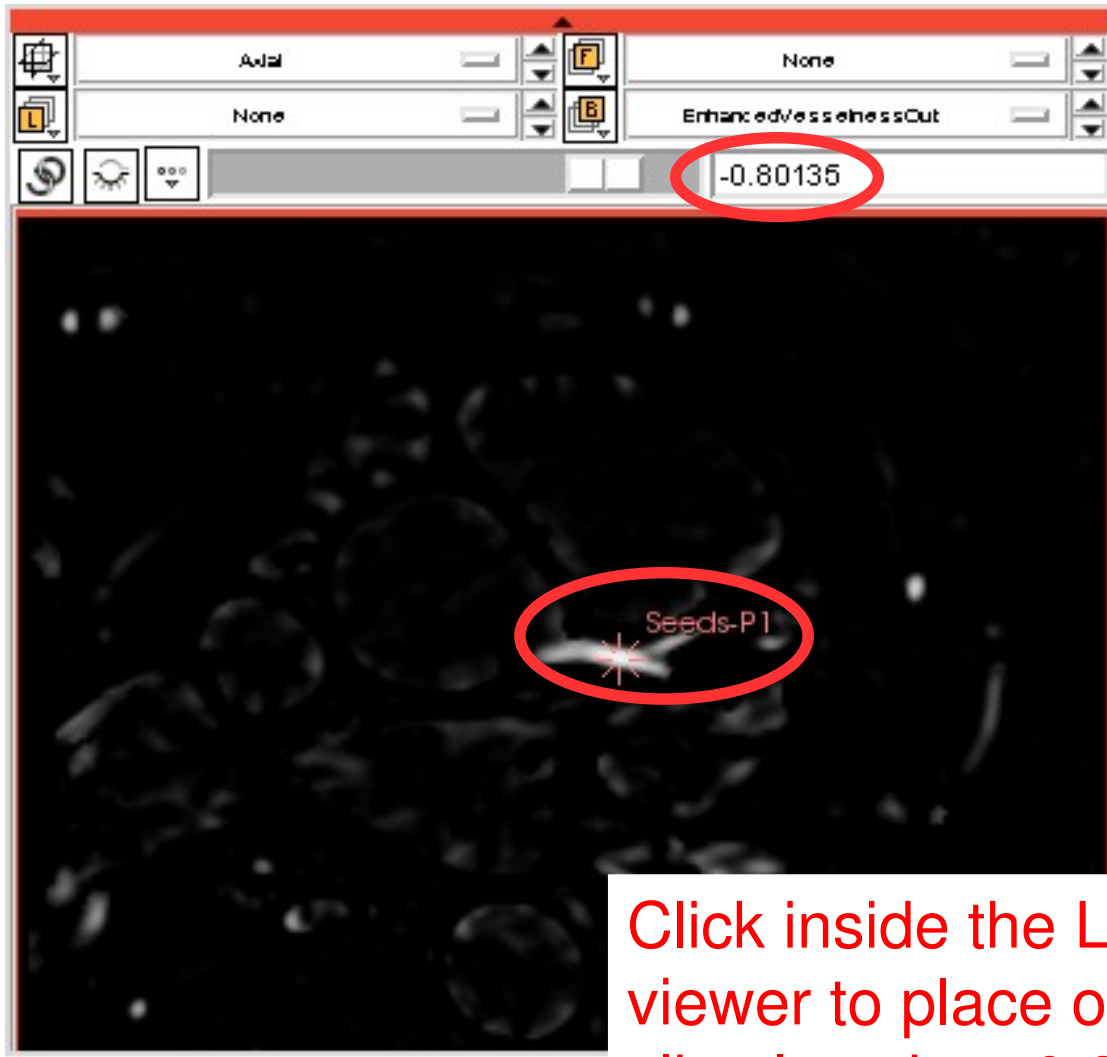
# Level Set Segmentation



Click inside the RCA on the red slice viewer to place one seed point (f.e. at slice location -15)



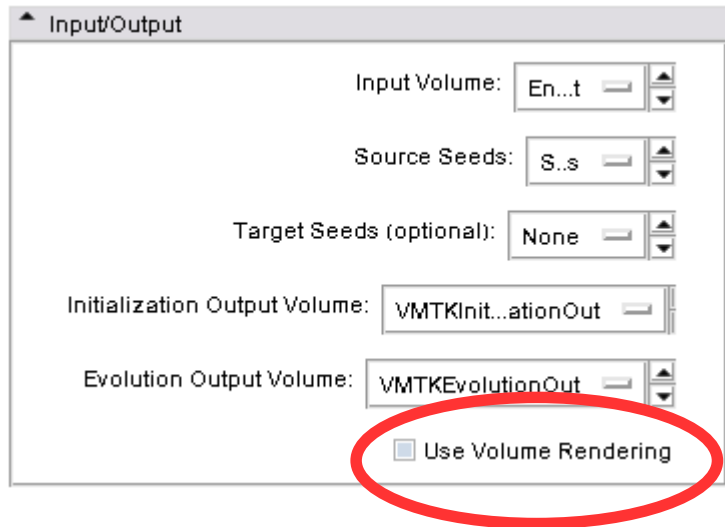
# Level Set Segmentation



Click inside the LCA on the red slice viewer to place one seed point (f.e. at slice location -0.80)

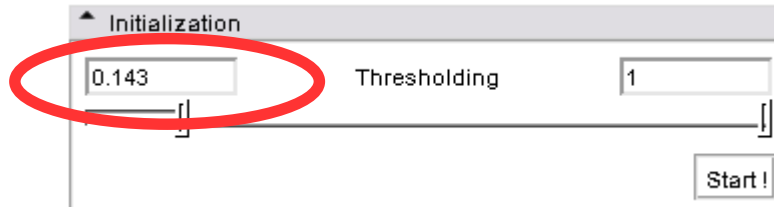
# Level Set Segmentation

---

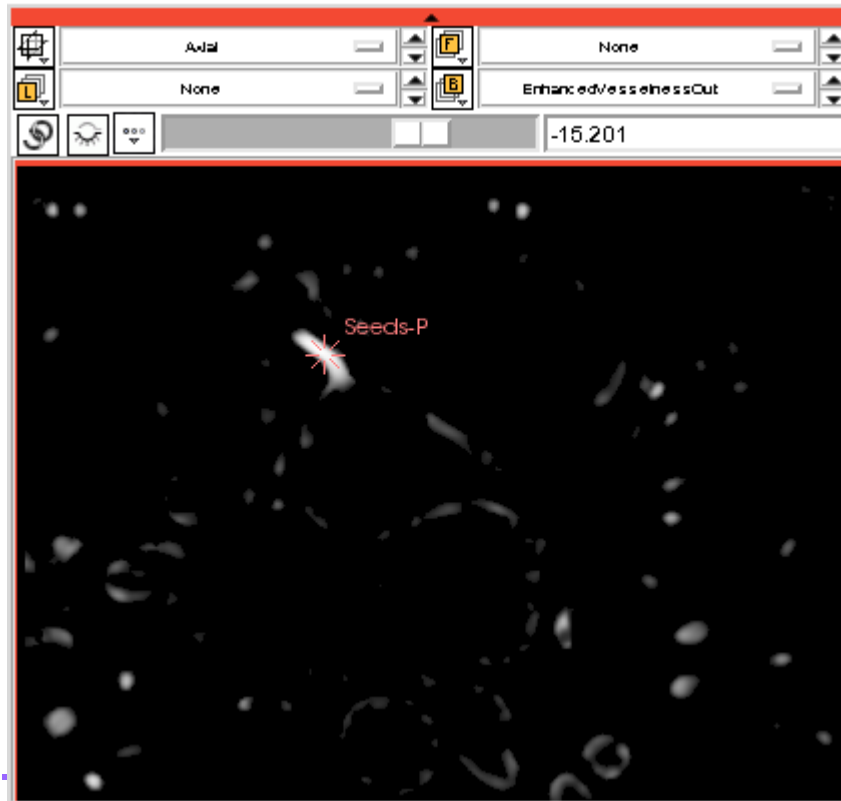


Deactivate “Use Volume Rendering”  
because Polydata is needed later

# Level Set Segmentation

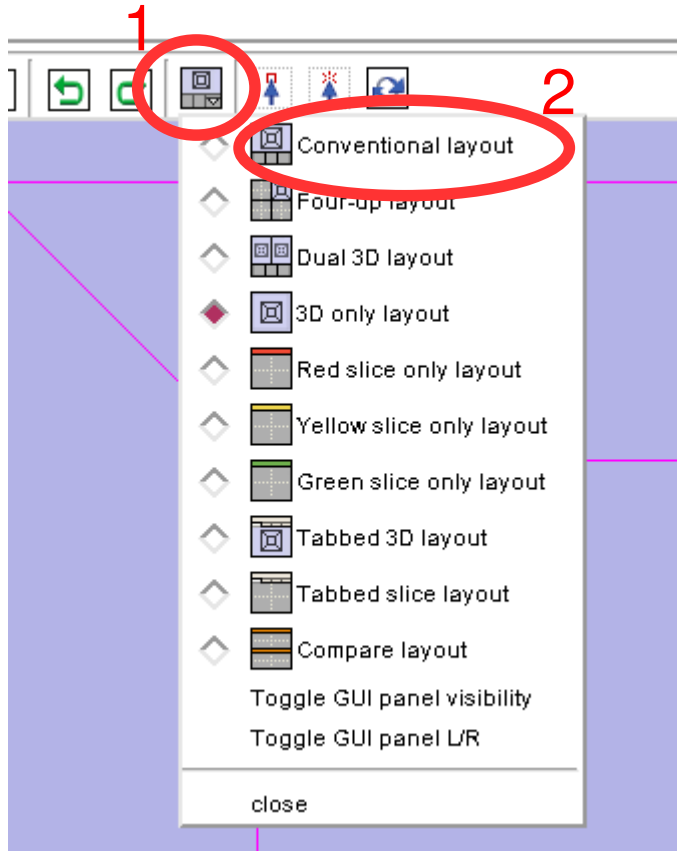


Set a lower threshold of  
“0.143”



This results in immediate  
visualization feedback at  
the slice viewers

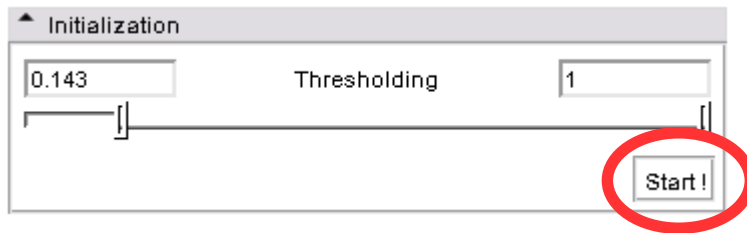
# Level Set Segmentation



Use the layout selector (1) to switch to the “Conventional layout” (2)

# Level Set Segmentation

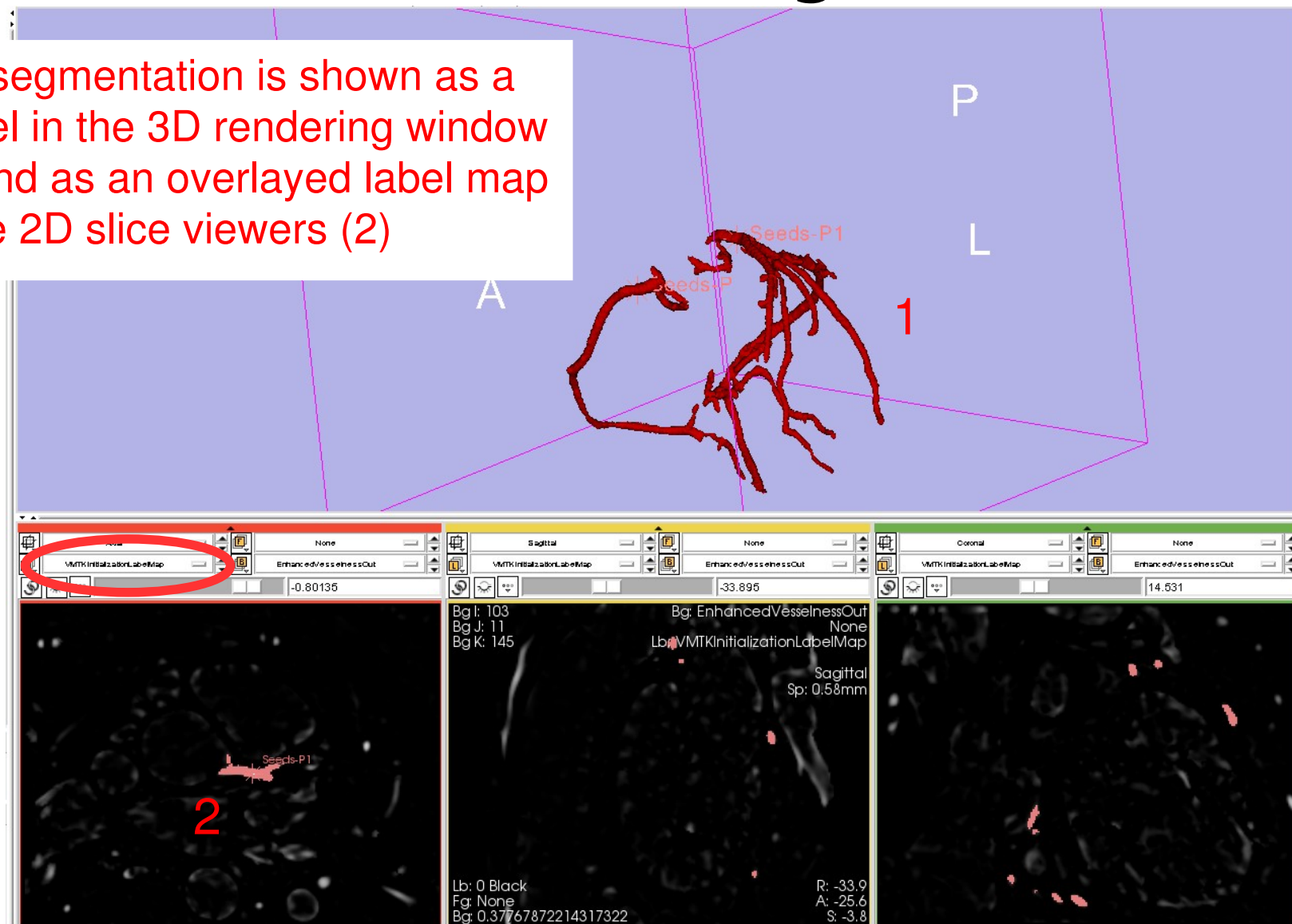
---



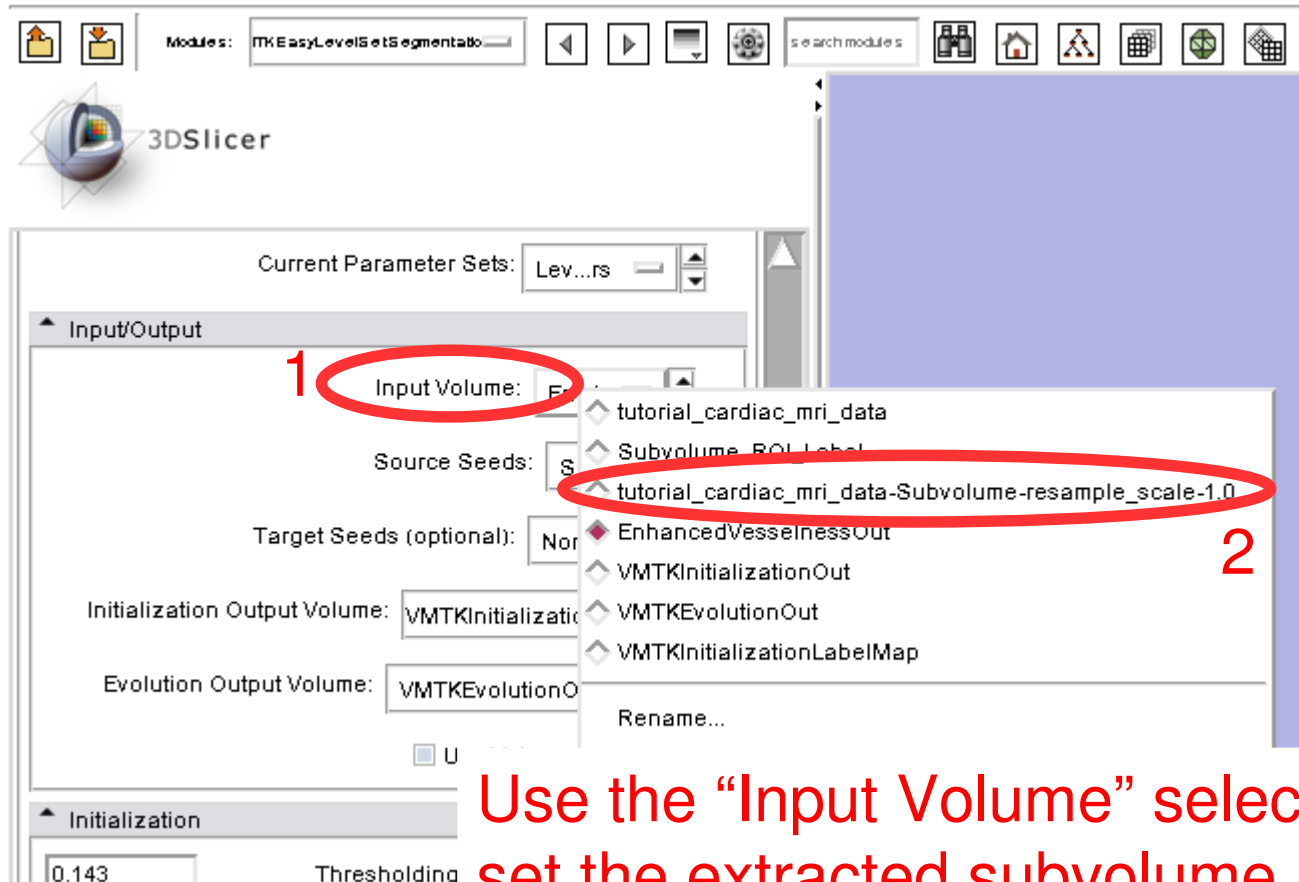
Click "Start!"

# Level Set Segmentation

The segmentation is shown as a model in the 3D rendering window (1) and as an overlaid label map in the 2D slice viewers (2)

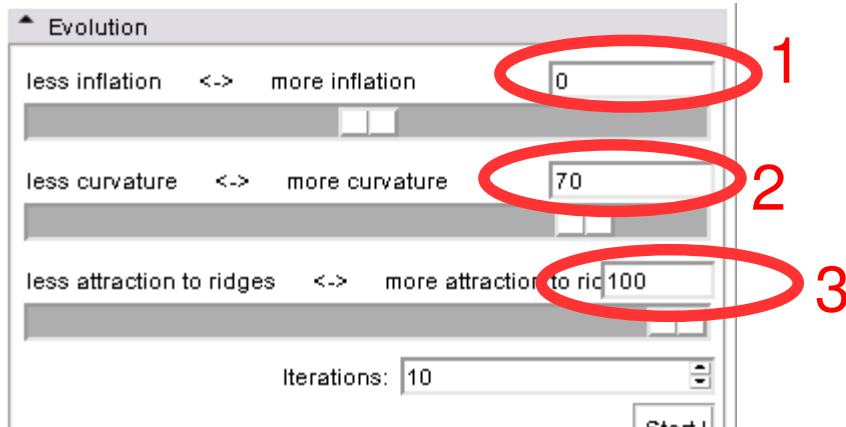


# Level Set Segmentation



Use the “Input Volume” selector (1) to set the extracted subvolume (2) as the input for the evolution stage

# Level Set Segmentation



Specify the behavior of the evolution by using the sliders.

The initialization is already close to the edges of the vessels so no inflation is needed (1).

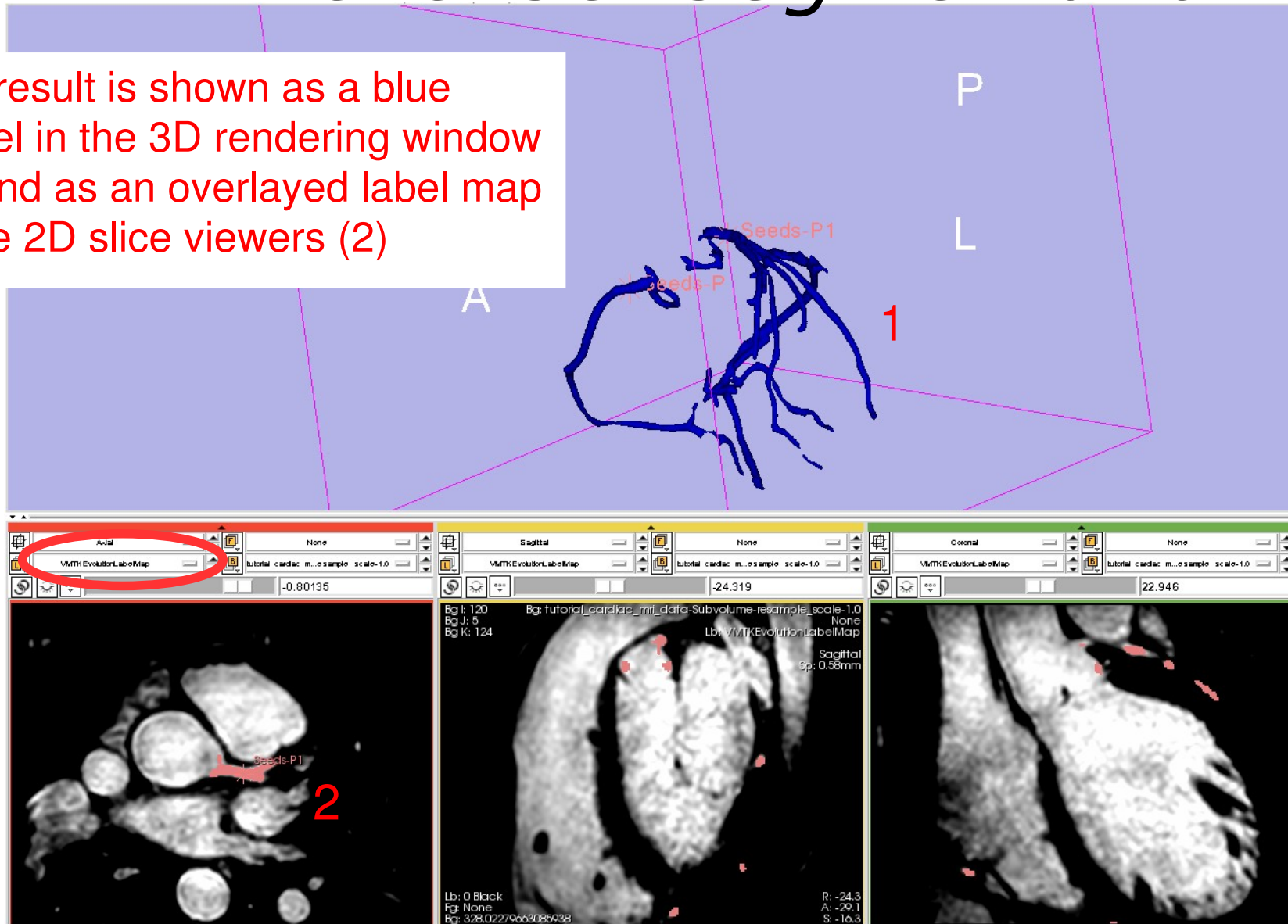
To get a smooth surface a higher curvature weight of “70” is important (2).

To attract the segmentation to the gradient ridges a high attraction weight of “100” is necessary (3).



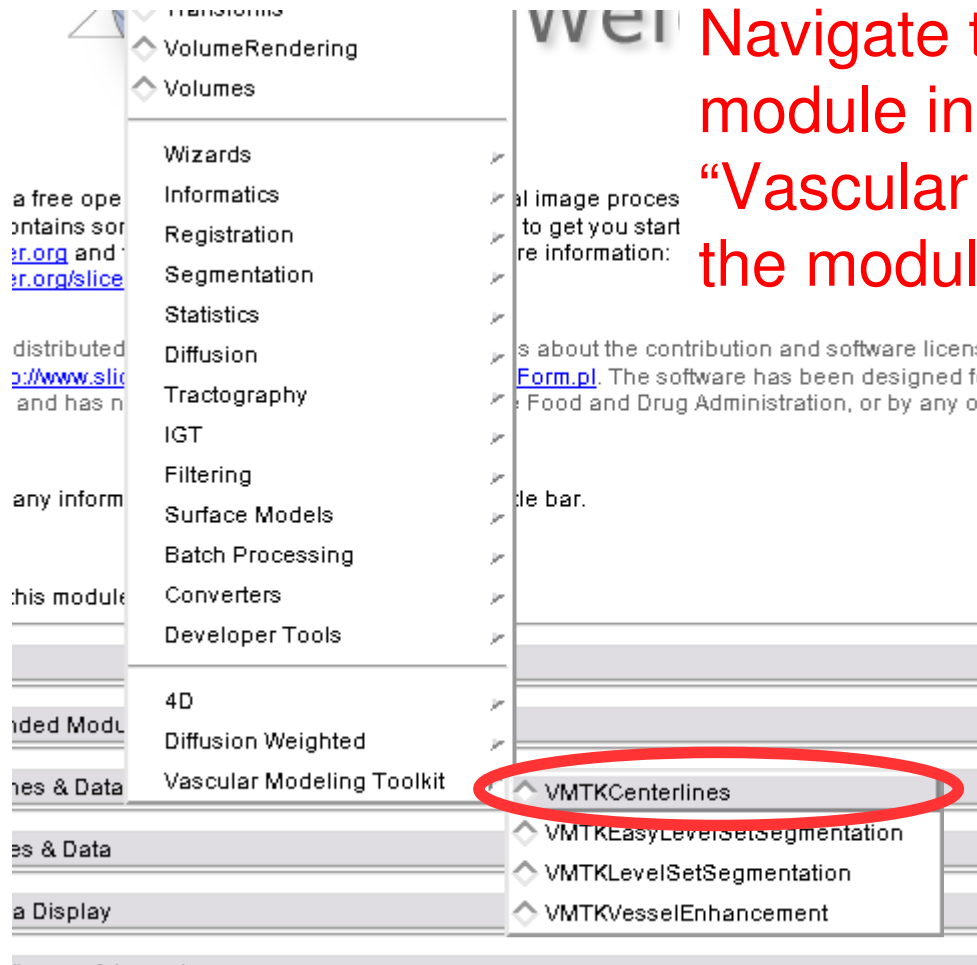
# Level Set Segmentation

The result is shown as a blue model in the 3D rendering window (1) and as an overlaid label map in the 2D slice viewers (2)





# Centerline Computation



Navigate to the VMTKCenterlines module inside the category “Vascular Modeling Toolkit” using the modules selector

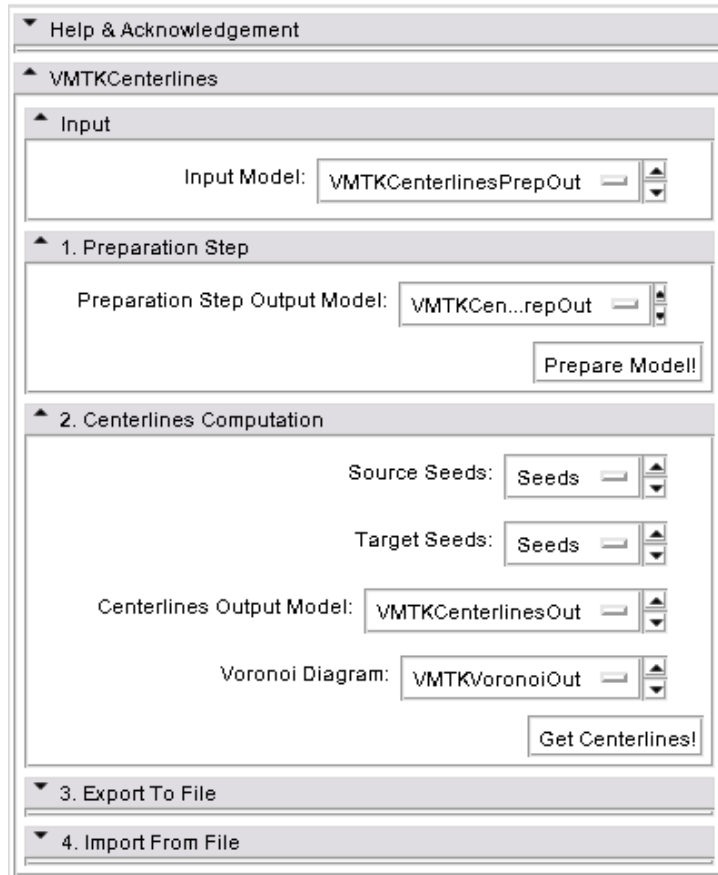


# Centerline Computation

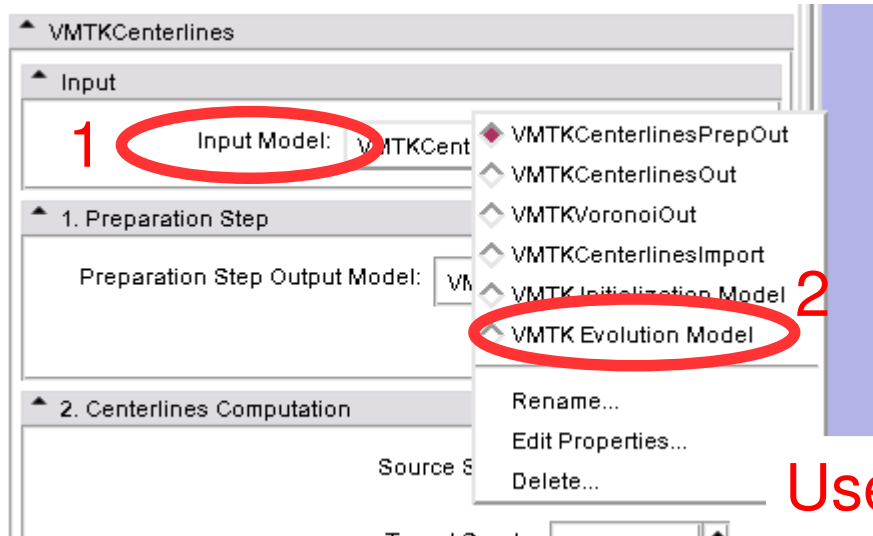


This panel now appears.

The Centerlines extraction consists of two steps: Model preparation and Centerline Computation



# Centerline Computation



Use the “Input Model” selector (1) to set the “VMTKEvolution Model” (2) as the input

# Centerline Computation

---

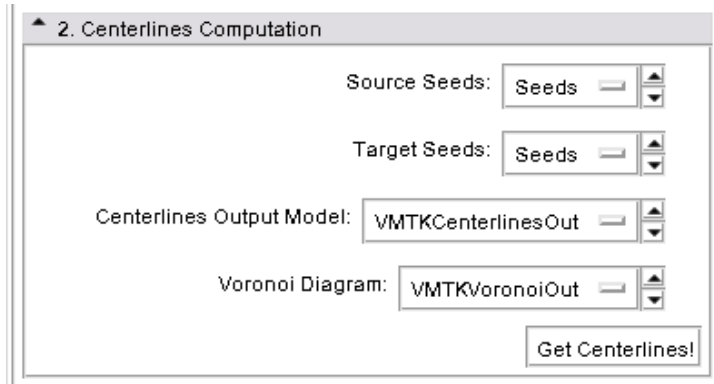


Click “Prepare Model!”

The blue model in the 3D  
Rendering Window turns  
green

# Centerline Computation

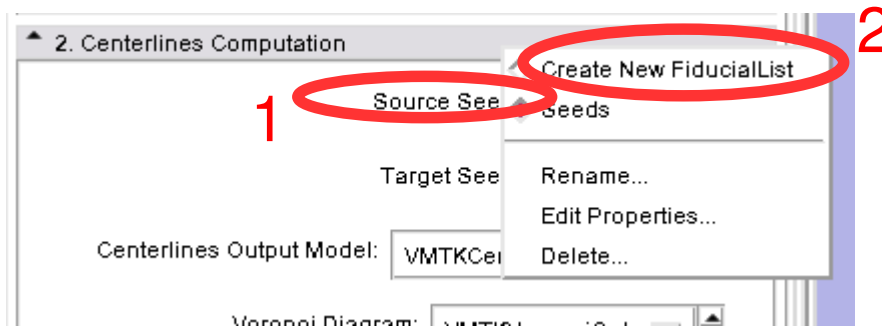
---



Now use the “Centerlines Computation” panel for step 2

# Centerline Computation

---



Use the “Source Seeds” selector (1) to create a new Fiducial list (2)

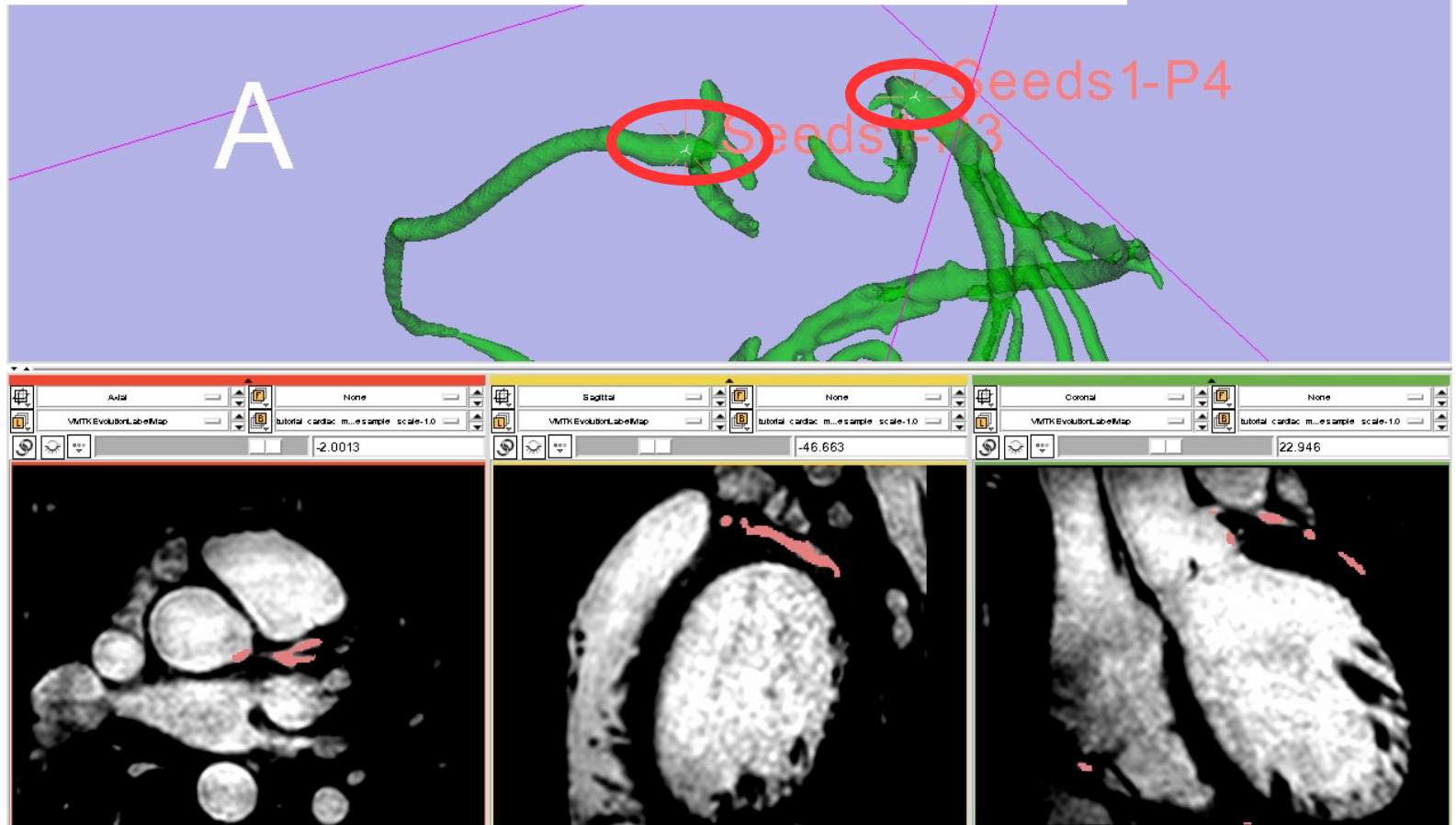
Note: It is recommended to use the Fiducials module to hide the Fiducial lists of the Level Set Segmentation process

---



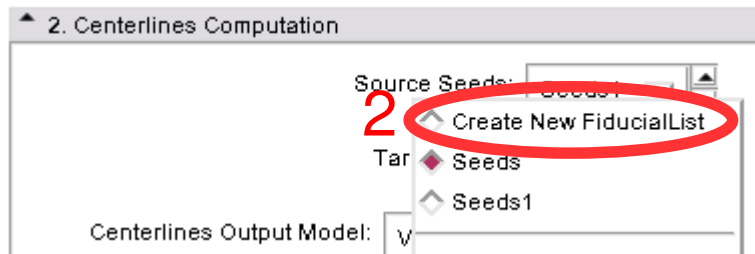
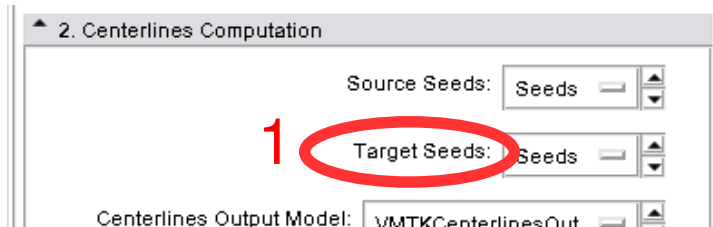
# Centerline Computation

Place two Seeds in the 3D Rendering Window directly on the green model where the Coronaries start





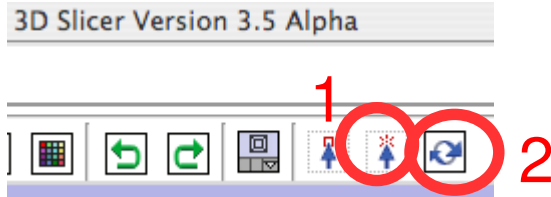
# Centerline Computation



Use the “Target Seeds” selector (1) to create a new Fiducial list (2)

# Centerline Computation

---

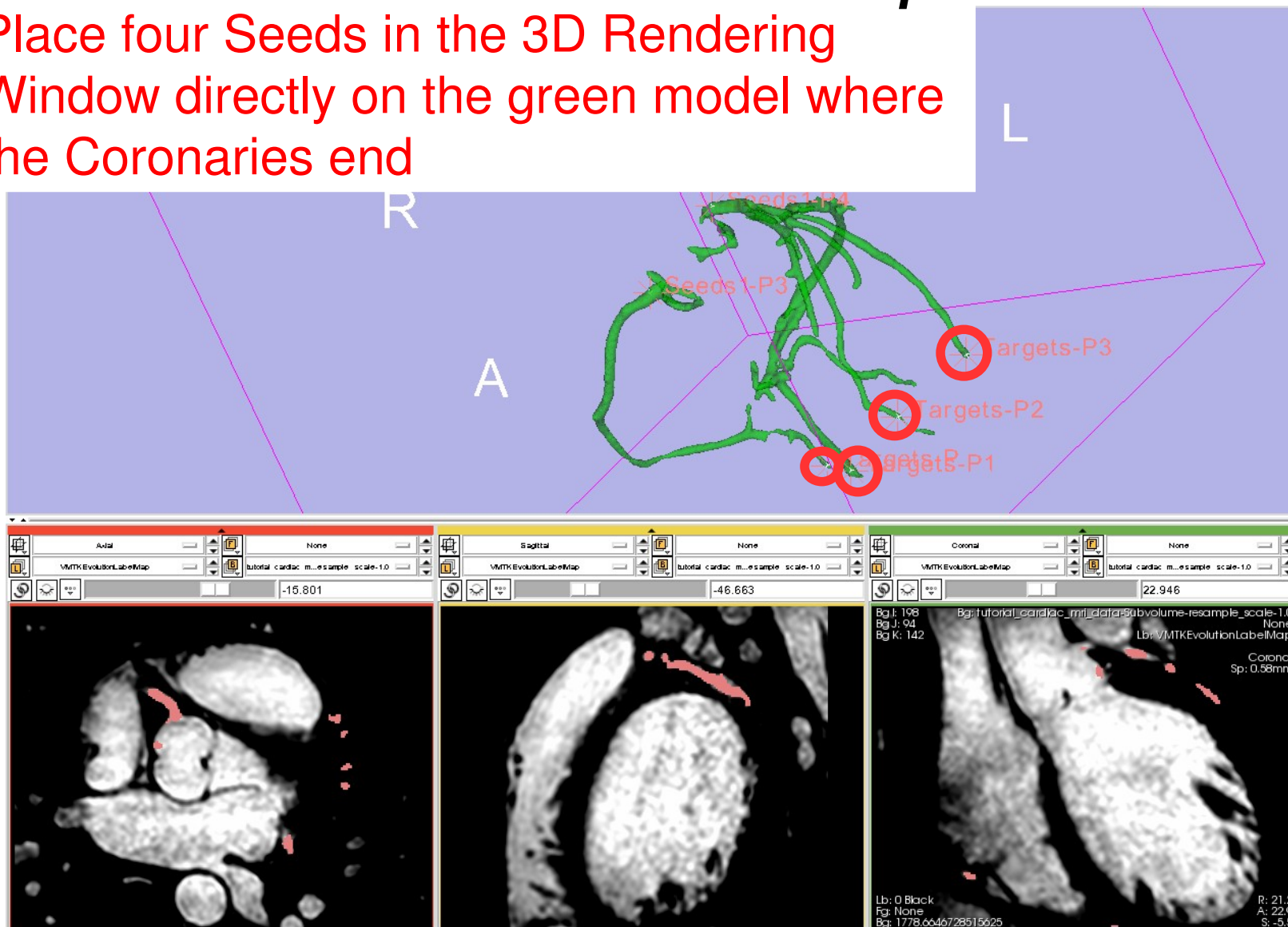


To place the Target Seeds correctly, it is recommended to first use the Transform mode (1) to rotate the model and then the Place mode (2) to set the fiducials



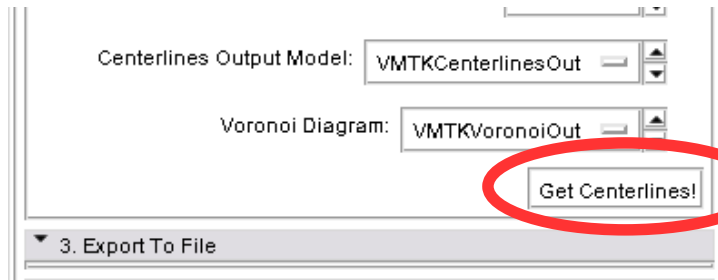
# Centerline Computation

Place four Seeds in the 3D Rendering Window directly on the green model where the Coronaries end



# Centerline Computation

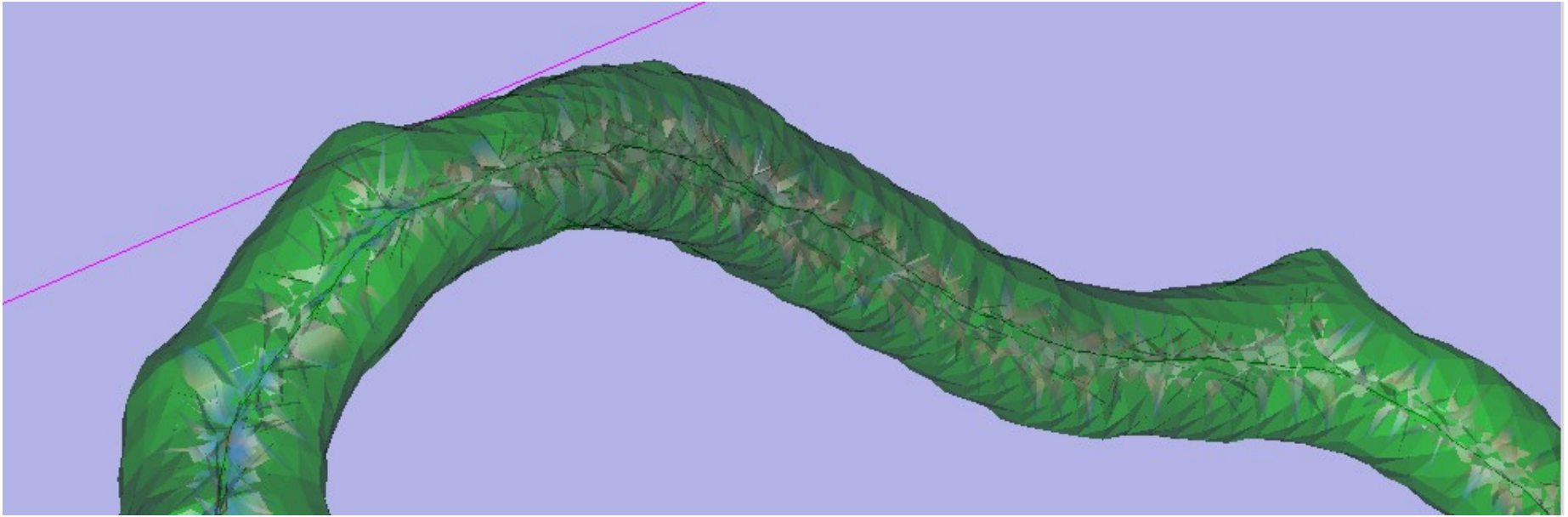
---



Click “Get Centerlines!”

# Centerline Computation

---

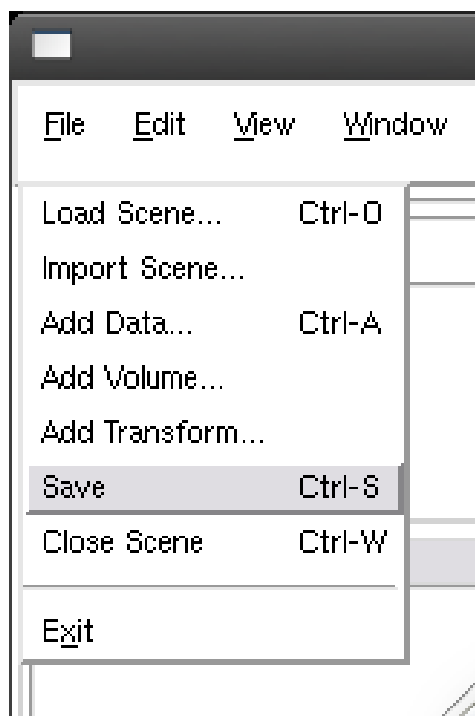


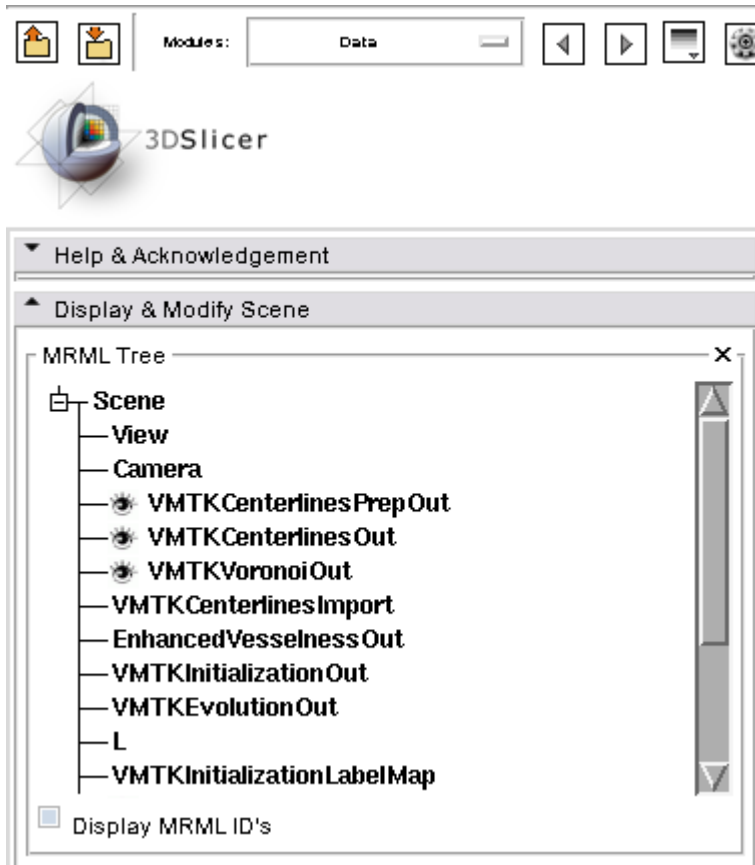
The Voronoi diagram and the corresponding Centerlines appear in the 3D Rendering Window. Use the right mouse button to Zoom into the 3D view

# Centerline Computation

---

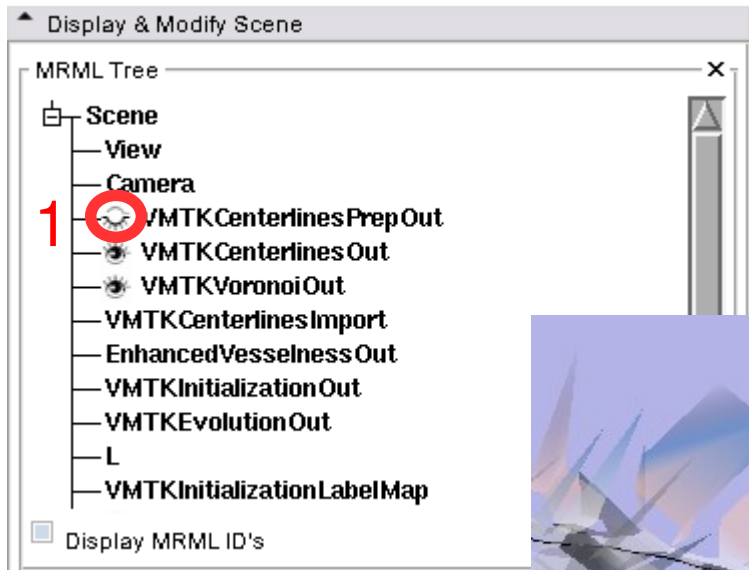
This is a good time to save the lumen segmentation, the generated Voronoi diagram, the Centerlines as Polydata and all other MRML data by using the “File” menu and “Save”.



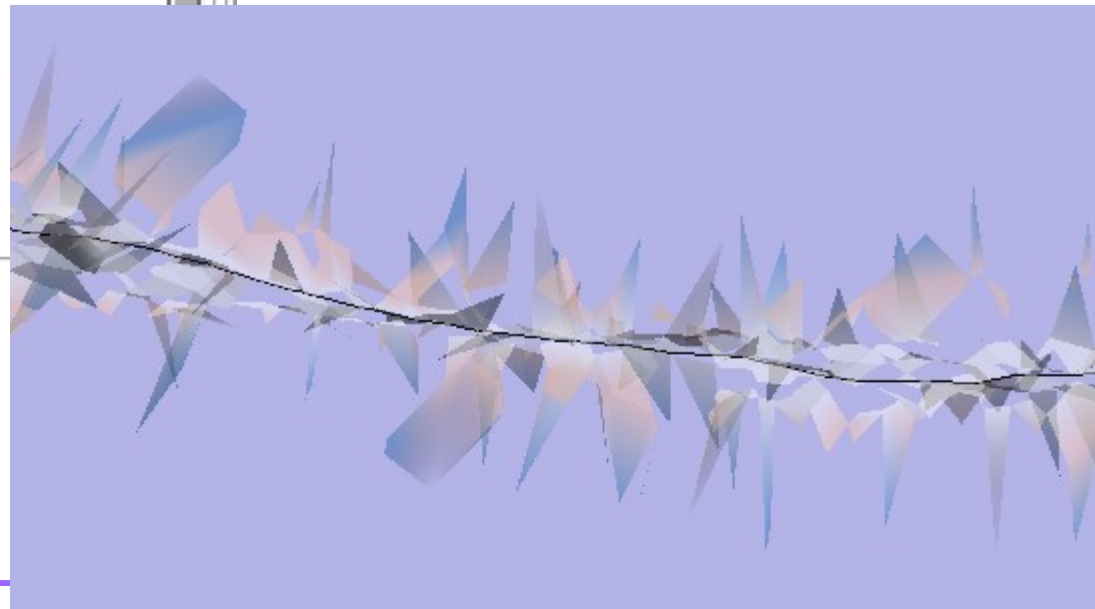


All segmentation parts are available as MRML nodes in the current scene. The “Data” module shows the MRML tree.

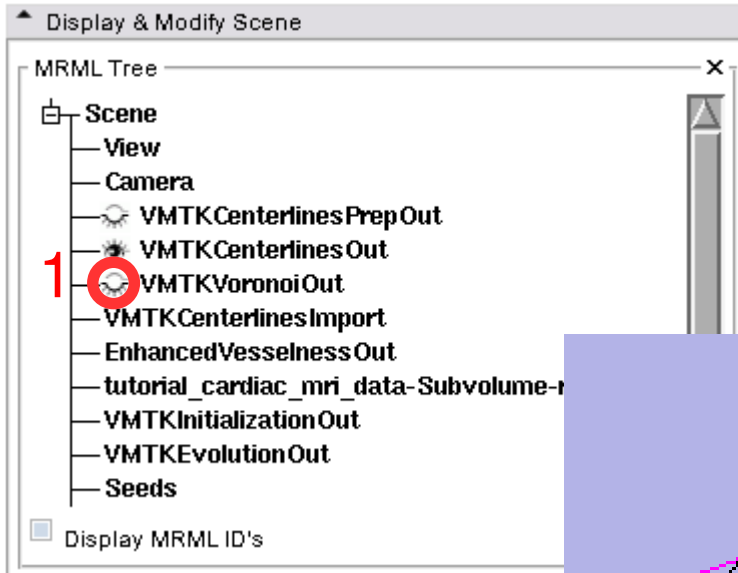
Deactivate the “VMTKCenterlinesPrepOut” model to hide the segmented lumen (1).



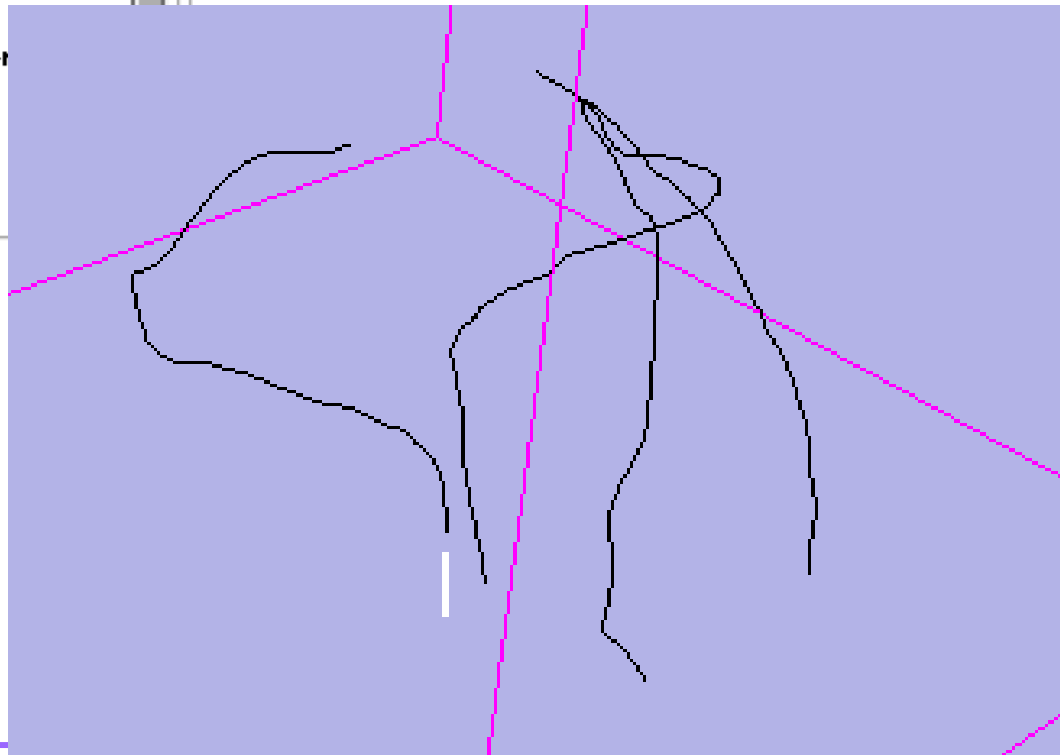
The 3D Rendering Window then shows the Voronoi diagram and the corresponding Centerlines only.

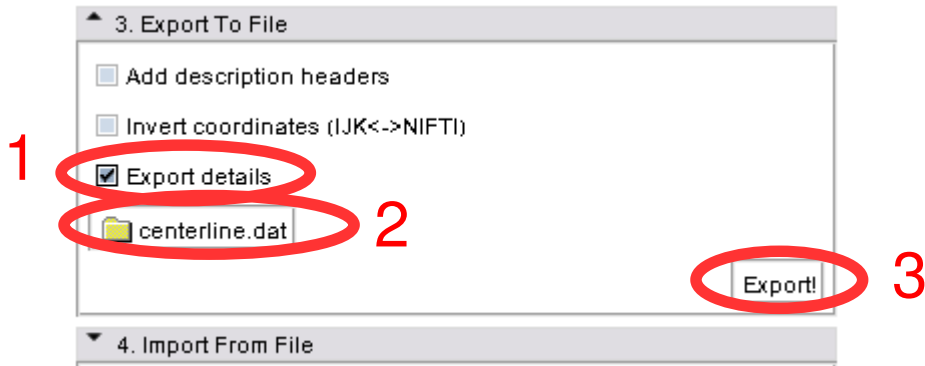






Hide the “VMTKVoronoiOut” model (1) to show the Centerlines in the 3D Rendering Window only.





The VMTKCenterlines module supports the export of extracted Centerlines as clouds of points to the filesystem.

To export details like the maximum inscribed sphere radius activate the checkbox (1), choose a destination (2) and click “Export!” (3).

```
centerline.dat
-43.3799209595 23.5764255524 -2.75626325607 1.36027798035 83603.0 83156.0 0.768
-43.5243453979 23.6248474121 -2.82282710075 1.3566731071 83156.0 74764.0 0.076
-43.5672912598 23.6453304291 -2.84163999557 1.34768368553 83607.0 74764.0 0.048
-43.5732279005 23.6756229401 -2.9027071044 1.34341124572 83609.0 83607.0 0.264
-44.3442382812 23.8746795654 -3.11588931084 1.31434156682 83606.0 83606.0 0.0
-44.4300005264 23.8921318054 -3.12345113991 1.3036475189 82713.0 82713.0 0.0
-44.6662406921 23.9847869873 -3.34564328194 1.31296327481 81841.0 81841.0 0.0
-44.7160263062 24.0004348755 -3.36203813553 1.30802900025 81391.0 84189.0 0.86
-45.0118713379 24.0653190613 -3.4202637674 1.36677139288 84204.0 84204.0 0.0
-45.1805000305 24.090801239 -3.53823828697 1.4202217277 82318.0 82318.0 0.0
-45.3257102966 24.1287307739 -3.57551217079 1.44477739523 67865.0 67865.0 0.0
-45.3494758606 24.1336631775 -3.5815103054 1.45031551176 82920.0 82920.0 0.72
-45.4803161621 24.1486034393 -3.61397314072 1.45145492922 59494.0 82920.0 0.872
-45.5894927979 24.1538124084 -3.6366481781 1.45405727223 82684.0 82699.0 0.104
-45.8841552734 24.2133865356 -3.7017223835 1.45863325172 82693.0 82693.0 0.0
-45.9728851318 24.2313556671 -3.73139214516 1.46847106443 54075.0 54075.0 0.0
-45.9736022949 24.2315006256 -3.73163151741 1.475319103 54075.0 81328.0 0.992
-46.1253738403 24.3120250702 -3.77564024925 1.47537432912 81328.0 81328.0 0.0
-46.2832069397 24.3910942078 -3.82611846924 1.46098955773 81335.0 83671.0 0.576
-46.5725059509 24.5075893402 -3.93619441986 1.45986542314 83675.0 83671.0 0.736
-46.5947151184 24.5178642273 -3.94453048706 1.47386688327 83672.0 83675.0 0.052
-46.6676940918 24.5478801727 -3.9686293602 1.47718453004 83732.0 83732.0 0.0
-46.7952346802 24.5904388428 -4.00715827942 1.48037306238 83731.0 83728.0 0.312
-46.8497428894 2
-47.119468689 24
-47.4573402405 2
-47.7022323608 2
-47.7347488403 2
-48.2051200867 2
-48.295879364 25
-48.3784751892 2
-48.4057388306 2
-48.4948959351 2
-48.6587486267 2
-48.765625 25.28
-48.8083724976 2
.....
```

The exported file includes the world coordinates (1) of the Centerlines and also the Maximum Inscribed Sphere Radius (2) for each point.



# Conclusion

---

- VMTK extensions installable using the extension wizard
- Vesselness Filtering using VMTKVesselEnhancement
- Lumen Segmentation using VMTKEasyLevelSetSegmentation
- Centerline Computation using VMTKCenterlines
- 3D Slicer Integration for further processing of the data (MRML nodes)
- Open Source Environment

Luca Antiga, Marina Piccinelli, Lorenzo Botti, Bogdan Ene-Iordache, Andrea Remuzzi, and David A Steinman. An image-based modeling framework for patient-specific computational hemodynamics. *Med Biol Eng Comput*, 46(11):1097–1112, Nov 2008.

V. Caselles, R. Kimmel, and G. Sapiro. Geodesic active contours. In *Proc. Fifth International Conference on Computer Vision*, pages 694–699, 20–23 June 1995.

Alejandro F. Frangi, Ro F. Frangi, Wiro J. Niessen, Koen L. Vincken, and Max A. Viergever. Multiscale vessel enhancement filtering. In *Lecture Notes in Computer Science*, volume 1496, pages 130–137. Springer-Verlag, 1998.

J. A. Sethian. *Level Set Methods and Fast Marching Methods: Evolving Interfaces in Computational Geometry, Fluid Mechanics, Computer Vision, and Materials Science (Cambridge ... on Applied and Computational Mathematics)*. Cambridge University Press, 2 edition, 6 1999.

---



# Acknowledgements

---



**National Alliance for Medical Image Computing**



**Surgical Planning Laboratory (BWH)**  
Steve Pieper, Ron Kikinis



**Mario Negri Institute**  
Luca Antiga



---

Thank you for using this  
tutorial!