

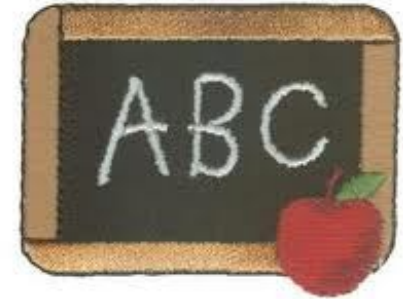


ABC: Atlas-Based Classification

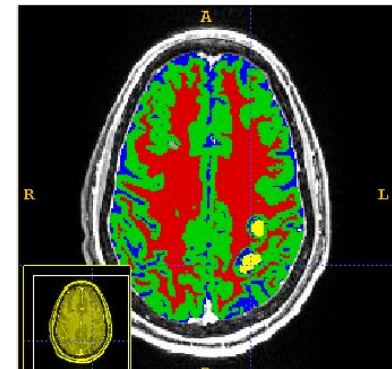
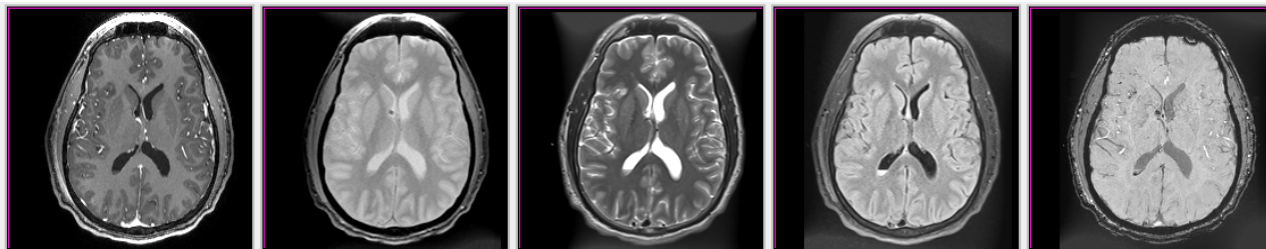
Key Investigators:

Bo Wang, Marcel Prastawa, Guido Gerig, SCI Utah

TBI: Andrei Irimia, Micah Chambers, Jack Van Horn, UCLA



- ABC integrates co-registration, bias correction and segmentation into one framework
- Validation and testing for gm/wm/csf classification on TBI data
- Tests with 5 and more MRI channels





ABC: Extension to segment pathology

- **Limitation:** ABC only segments healthy tissue and csf
- TBI cases present bleedings, lesions, fractures, large deformations, etc.
- → **Develop concept for user-assisted segmentation of pathology**

